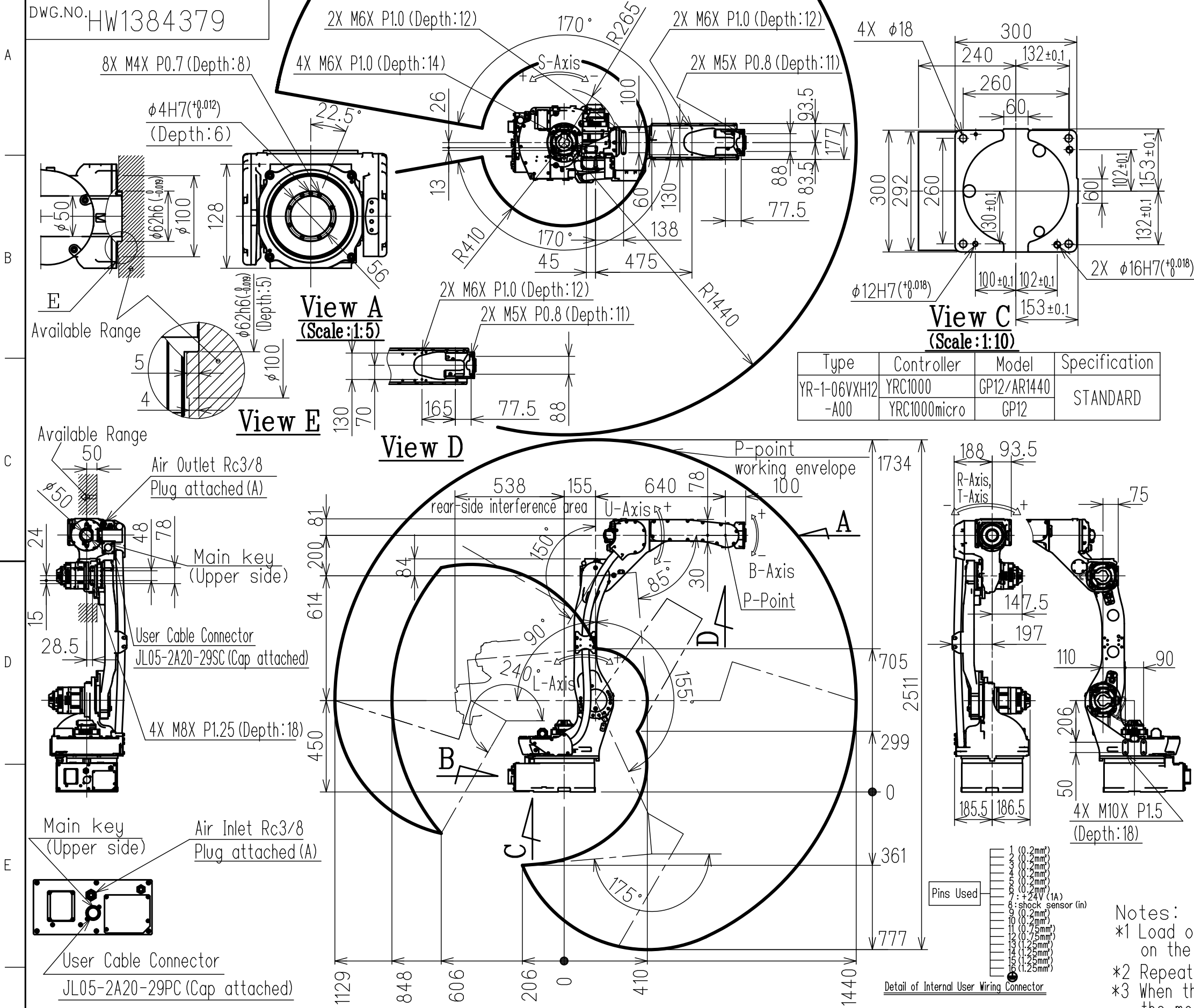


DWG.NO. HW1384379



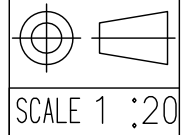
Type	Controller	Model	Specification
YR-1-06VXH12-A00	YRC1000	GP12/AR1440	STANDARD
	YRC1000micro	GP12	

Item	Model	MOTOMAN-GP12/AR1440
Configuration	Vertically Articulated	
Degree of Freedom	6	
Payload	Wrist	12kg
	On U-arm (*1)	10kg
Repeatability (*2)	0.02mm	
Range of Motion	S-Axis	-170° - +170°
	L-Axis	-90° - +155°
	U-Axis	-85° - +150°
	R-Axis	-200° - +200°
	B-Axis	-150° - +150°
	T-Axis	-455° - +455°
Maximum Speed	S-Axis	4.53rad/s, 260° /s
	L-Axis	4.01rad/s, 230° /s
	U-Axis	4.53rad/s, 260° /s
	R-Axis	8.20rad/s, 470° /s
	B-Axis	8.20rad/s, 470° /s
Allowable Moment	R-Axis	22N·m (2.2kgf·m)
	B-Axis	22N·m (2.2kgf·m)
	T-Axis	9.8N·m (1.0kgf·m)
Allowable Inertia (GD ² /4)	R-Axis	0.65kg·m ²
	B-Axis	0.65kg·m ²
	T-Axis	0.17kg·m ²
Mass	150kg	
Protection rating	Body:IP54 Wrist:IP67	
Mounting method (*3)	Floor-,Wall-,Tilt-,Ceiling-mounted	
Ambient Conditions	Temperature	0°C - +45°C
	Humidity	20%RH - 80%RH (Non-condensing)
	Vibration acceleration	4.9m/s ² (0.5G) or less
	Altitude	1000m or less
	Flatness for installation	0.5mm or less
Others	<ul style="list-style-type: none"> Free from dirt, dust, oil soot, or water Free from explosive and corrosive gas or liquid Free from excessive electrical noise (plasma) Free from strong magnetic field 	
Power Requirements	1.5KVA	
Applicable controller	YRC1000/YRC1000micro	

Notes:
 *1 Load on the U-arm will vary depending on the load weight of the wrist part.
 *2 Repeatability conforms to ISO9283.
 *3 When the manipulator is installed on a slope or a wall, the motion of S-axis will be limited.
 *4 The manipulator is in the home position. Units:mm

Note:
 1.All rights reserved.
 2.Please note that the data is subject to be deleted without advance notice.
 3.No warranty is given in relation to the data including the specification.
 4.We are not responsible for any damages or loss caused by the use of the data.

FOR STUDY PURPOSE ONLY



YASKAWA
 株式会社 安川電機

Reference Drawing

TITLE MOTOMAN-GP12/AR1440
 DIMENSION DIAGRAM

DRWN DATE Aug.18.'16
 DWG.NO. HW1384379

SIZE A3