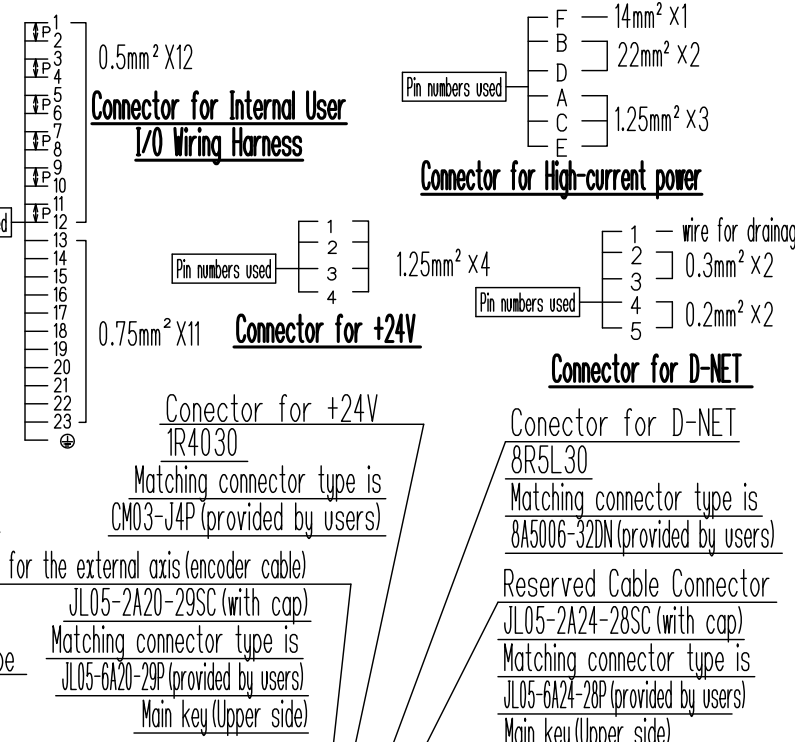
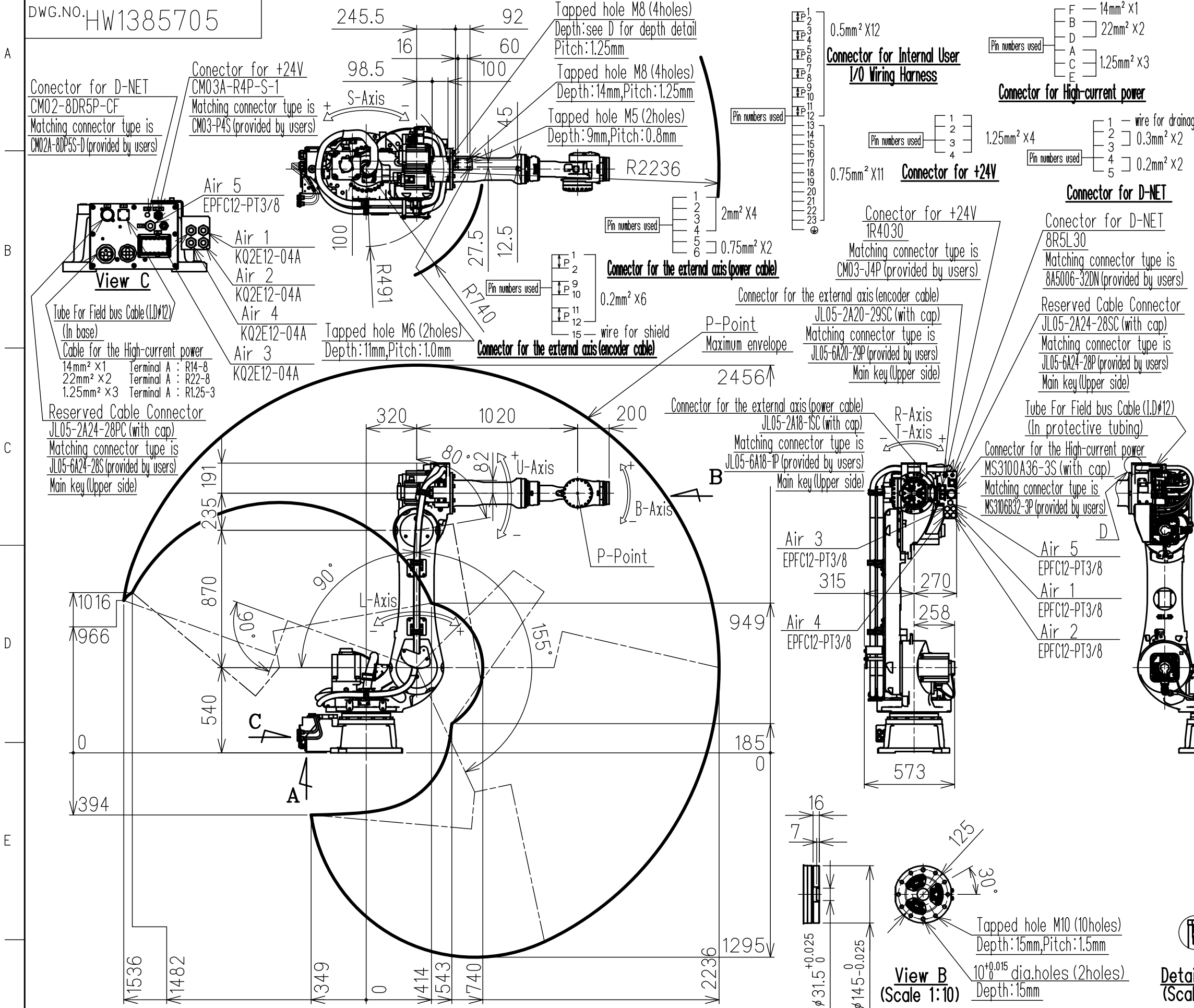
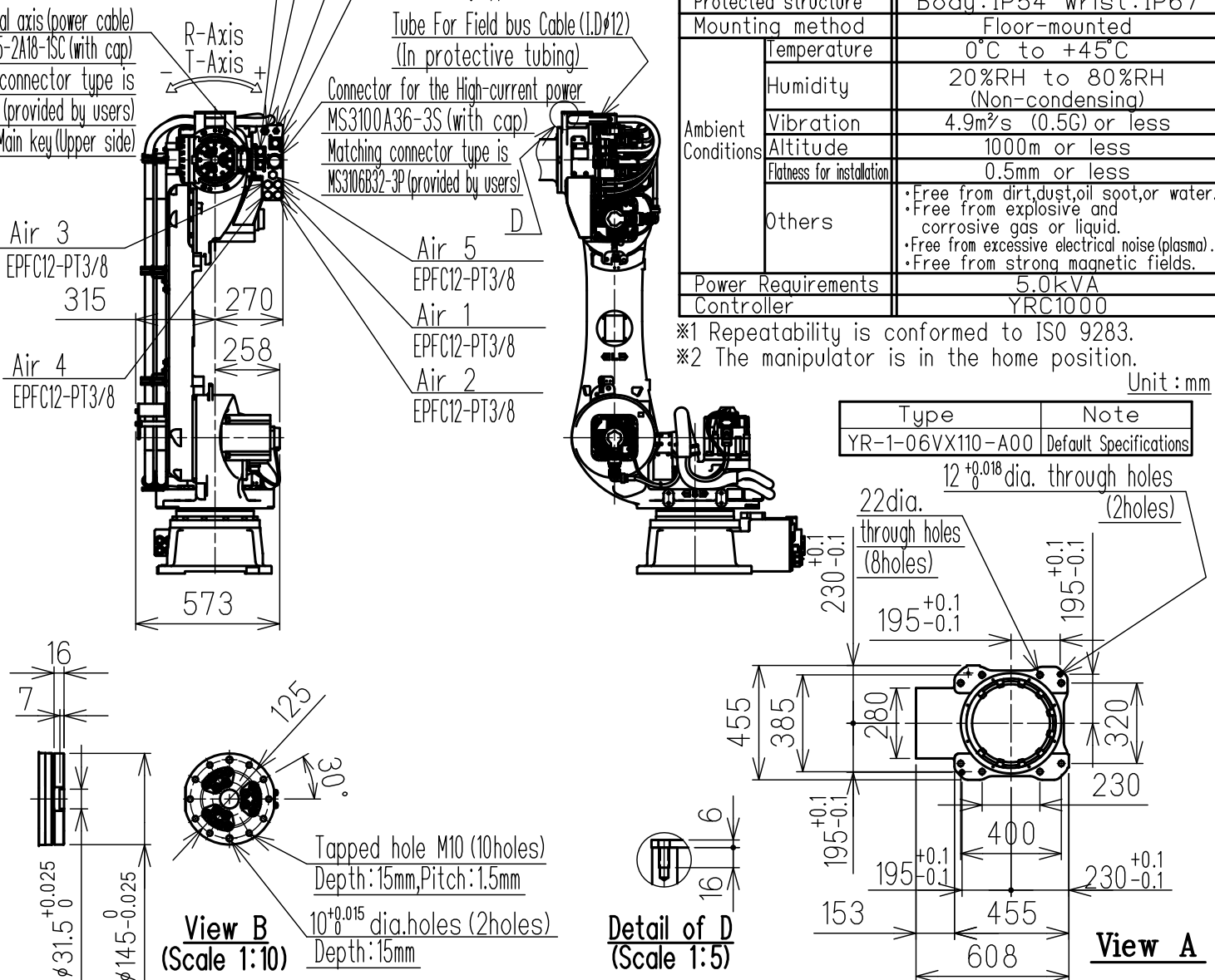


DWG.NO. HW1385705



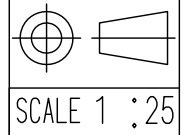
Item	Model	MOTOMAN-GP110
Configuration		Vertically articulated
Degree of Freedom		6
Payload	Wrist	110kg
	On U-arm	10kg
Repeatability (※1)		0.03mm
Range of Motion	S-Axis	-180° - +180°
	L-Axis	-90° - +155°
	U-Axis	-80° - +90°
	R-Axis	-360° - +360°
	B-Axis	-125° - +125°
	T-Axis	-360° - +360°
Max Speed	S-Axis	2.45 rad/s, 140°/s
	L-Axis	1.92 rad/s, 110°/s
	U-Axis	2.27 rad/s, 130°/s
	R-Axis	3.05 rad/s, 175°/s
	B-Axis	3.05 rad/s, 175°/s
Allowable Moment	R-Axis	721N·m (73.5kqf·m)
	B-Axis	721N·m (73.5kqf·m)
	T-Axis	294N·m (30kqf·m)
Allowable Inertia (GD²/4)	R-Axis	60kg·m²
	B-Axis	60kg·m²
T-Axis	33.7kg·m²	
Approx. Robot mass		660kg
Protected structure		Body: IP54 Wrist: IP67
Mounting method		Floor-mounted
Ambient Conditions	Temperature	0°C to +45°C
	Humidity	20%RH to 80%RH (Non-condensing)
	Vibration	4.9m/s² (0.5G) or less
	Altitude	1000m or less
	Flatness for installation	0.5mm or less
Others		•Free from dirt, dust, oil, soot, or water. •Free from explosive and corrosive gas or liquid. •Free from excessive electrical noise (plasma). •Free from strong magnetic fields.
Power Requirements		5.0kVA
Controller		YRC1000

※1 Repeatability is conformed to ISO 9283.  
 ※2 The manipulator is in the home position.  
 Unit: mm



Note:  
 1. All rights reserved.  
 2. Please note that the data is subject to be deleted without advance notice.  
 3. No warranty is given in relation to the data including the specification.  
 4. We are not responsible for any damages or loss caused by the use of the data.

FOR STUDY PURPOSE ONLY



**YASKAWA**  
 株式会社安川電機

Reference Drawing

TITLE MOTOMAN-GP110  
 DIMENSION DIAGRAM

DRWN DATE Sep. 29, '17  
 DWG.NO. HW1385705

SIZE A3