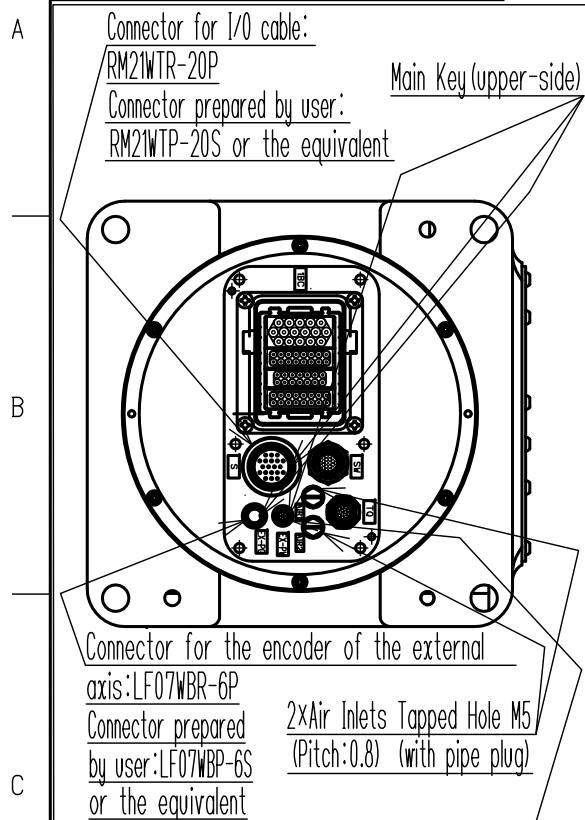
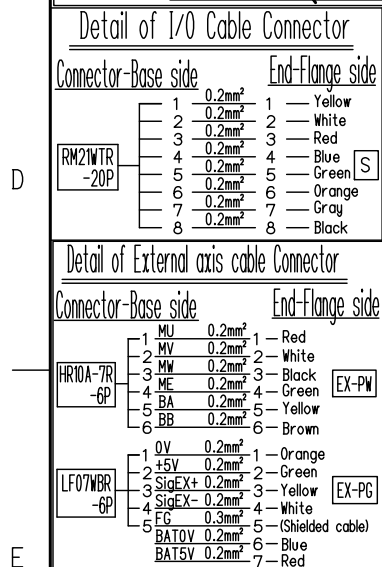


DWG.NO. HW1386099

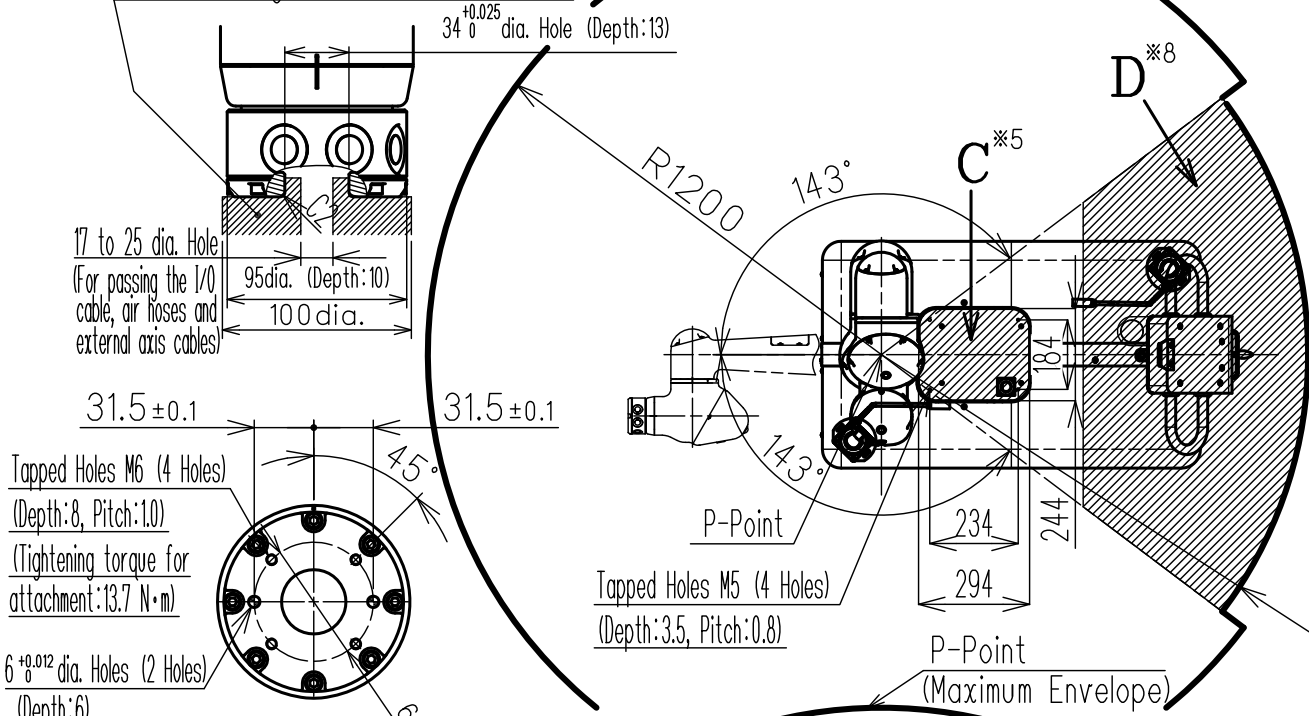


View A-A (Scale=1/4)

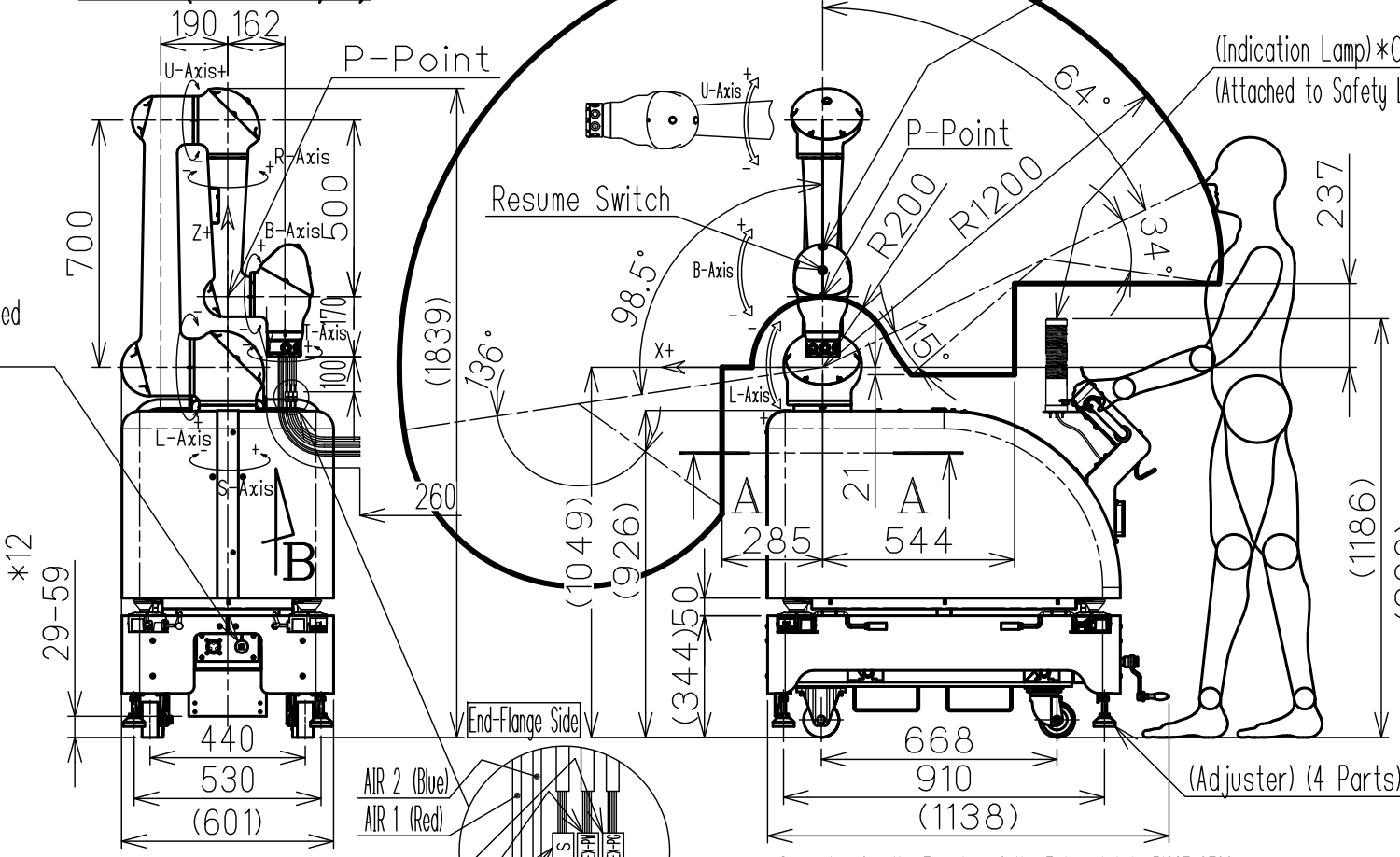


LAN Port connected to YRC1000micro (RJ45 connector)

Recommended Range for Mounting the Attachment
(Be aware of the interference when mounting the attachment.)



View B (Scale=1/4)



Connector for the Encoder of the External Axis: 51216-0700
Connector for the Power Supply of the External Axis: 51216-0600
Connector for I/O Cable: 51216-0800

Tool Side Connector Details

Connector for the Encoder of the External Axis: 51227-0700
Connector for the Power Supply of the External Axis: 51227-0600
Connector for I/O Cable: 51227-0800

2x Air Hoses (Outside dia. 4)

- *1 Repeatability conforms to ISO 9283.
- *2 The posture in this drawing is in the home position.
- *3 The maximum speed value in this table is the available maximum value and will vary depending on the load, posture, or range of motion.
- *4 The total mass includes the manipulator, the controller, and the transformer (only for YHT-1-06VXHC10-1).
- *5 Area C is the location to load on the hand truck.
- *6 The power requirement value is obtained using YASKAWA's in-house measurement conditions and will vary depending on the load, motion pattern, or cycle time.
- *7 Users can select from three phase (200/220VAC at 50/60Hz) or single phase (200/230VAC at 50/60Hz).
- *8 Area D is the movable area of P-point on the plane above the indication lamp.
- *9 Based on the measurement on a concrete floor with adjuster.
- *10 Based on the measurement on a concrete floor with adjuster (fastened by anchor bolts).
- *11 In autonomous operation (not collaborative operation), fasten the adjuster with attached anchor brackets.
- *12 The gap between the floor surface and the lowest edge of the hand truck frame is a minimum of 29 mm when the casters are raised, and a maximum of 59 mm when the casters are lowered. Be aware of the interference with surroundings during transportation or installation.

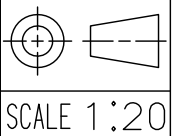
Item	Model	MOTOMAN-HC10DT Hand-Carry Type
Hand-Carry	YHT-1-06VXHC10-1	YHT-1-06VXHC10-2
Mounted Manipulator	YR-1-06VXHC10-C11	
Configuration	Vertically Articulated	
Degree of Freedom	6	
Payload	10kg	
Repeatability *1	Collaborative Enabled	0.05mm *7
	Operation Disabled	0.10mm *8
Range of Motion	S-Axis (Turning)	-180° - +180°
	L-Axis (Lower Arm)	-180° - +180°
	U-Axis (Upper Arm)	-5° - +355°
	R-Axis (Roll)	-180° - +180°
	B-Axis (Pitch/Yaw)	-180° - +180°
	T-Axis (Twist)	-180° - +180°
Maximum Speed *3	S-Axis	2.27rad/s, 130°/s
	L-Axis	2.27rad/s, 130°/s
	U-Axis	3.14rad/s, 180°/s
	R-Axis	3.14rad/s, 180°/s
	B-Axis	4.36rad/s, 250°/s
Allowable Moment	R-Axis	27.4N·m (2.8kgf·m)
	B-Axis	27.4N·m (2.8kgf·m)
	T-Axis	9.8N·m (1.0kgf·m)
Allowable Inertia (GD ² /4)	R-Axis	0.78 kg·m ²
	B-Axis	0.78 kg·m ²
	T-Axis	0.1 kg·m ²
Total Mass *4	243kg	225kg
Approx. Mass (Mounted Manipulator)	48kg	
Loadable Mass *5	20kg	
Protected Structure (Mounted Manipulator)	IP20	
Installation Method	Adjuster (fastened with anchor brackets *11)	
Ambient Conditions	Temperature	0 °C to 40 °C
	Humidity	20%RH to 80%RH (Non-Condensing)
	Vibration	4.9m/s ² (0.5G) or less
	Altitude	1000m or less
Others	<ul style="list-style-type: none"> •Free from explosive and corrosive gas or liquid. •Free from dust, soot, oil, or water. •Free from excessive electrical noise (plasma). •Free from strong magnetic field. 	
Power Requirements *6	1.0kVA	
Power Source	100VAC, 50/60Hz	Three Phase: 200/220VAC at 50/60Hz Single Phase 200/230VAC *7 at 50/60Hz
	Length of Primary Source Cable	4m
Applicable Controller	YRC1000micro	

(Safety Laser Scanner) (2 devices) *Option

Units:mm

注記
1.本データの変更、転載を禁止いたします。
2.本データは、予告なしに、削除する場合がございます。
3.本データは仕様を保證するものではありません。
4.本データの使用によって発生した一切の損害に
ついで責任は負いかねます。

営業用資料



YASKAWA
株式会社 安川電機

参考図

TITLE MOTOMAN-HC10DT HAND CARRY TYPE
DIMENSION DIAGRAM

DRWN DATE Spe. 19.'18
DWG.NO. HW1386099

SIZE A3