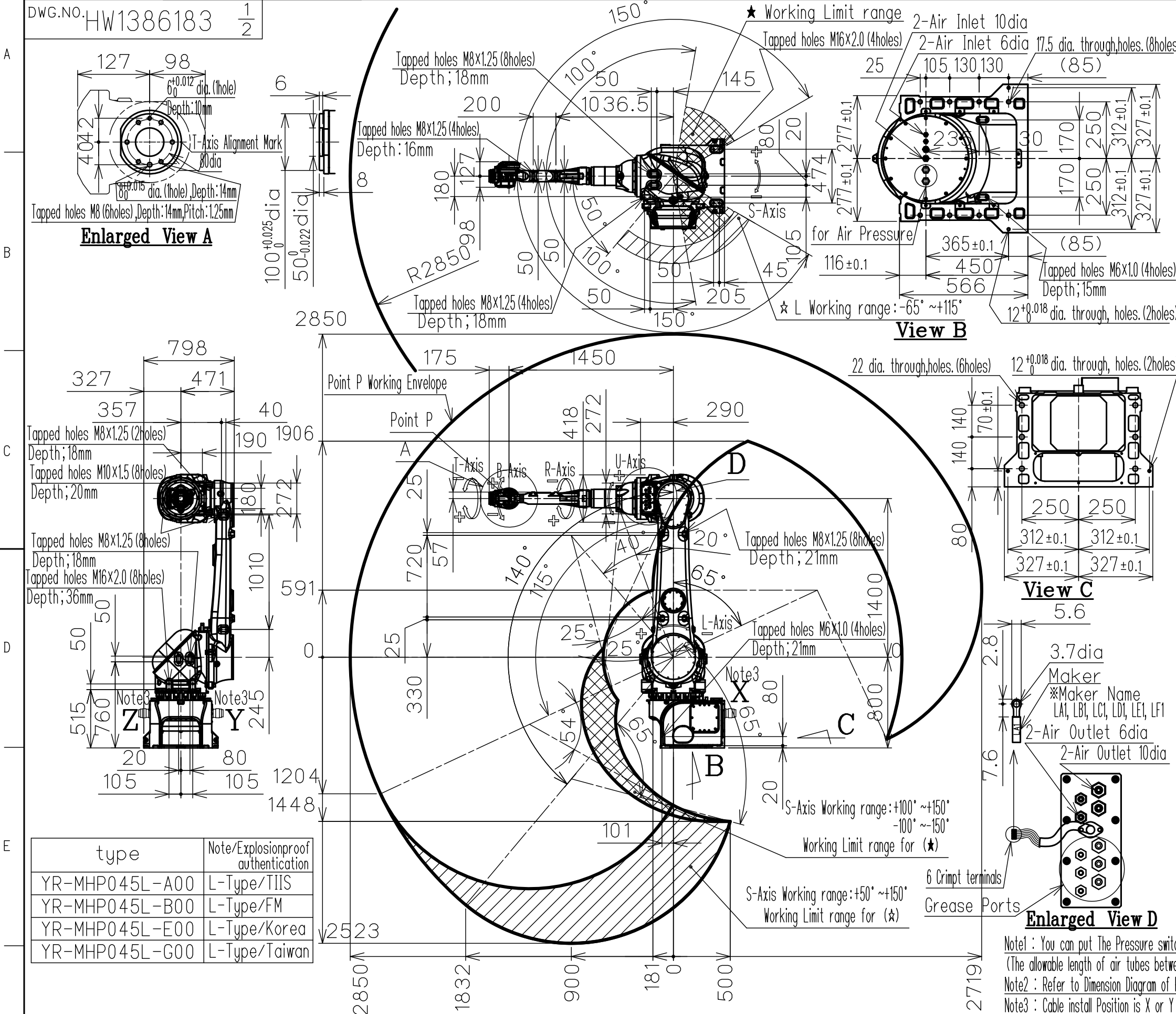


DWG.NO. HW1386183 1/2



Model		MOTOMAN-MHP45L
Item	Structure	Articulated Robot
	Degree of Freedom	6
	Payload (mass)	45kg
	Repetitive Positioning Accuracy	±0.07mm
Max.Motion Range	S-Axis (Turning)	-150° ~ +150°
	L-Axis (Lower Arm)	-65° ~ +140°
	U-Axis (Upper Arm, Lower Arm)	-65° ~ +180°
	R-Axis (Roll)	-360° ~ +360°
	B-Axis (Pitch/Yaw)	-125° ~ +125°
	T-Axis (Twist)	-360° ~ +360°
Max.Speed		1.6m/s
Allowable Moment	R-Axis	252.8N·m (25.8kgf·m)
	B-Axis	252.8N·m (25.8kgf·m)
	T-Axis	117.6N·m (11.9kgf·m)
Allowable Inertia (GD <sup>2</sup> /4)	R-Axis	13.9kg·m <sup>2</sup>
	B-Axis	13.9kg·m <sup>2</sup>
	T-Axis	3.2kg·m <sup>2</sup>
Approx.Robot mass		650kg
Protection Class		Body: IP4X Wrist: IP65
Cleanliness (reference)		Equivalent to ISO class 5
Location	Ambient Temperature	0 ~ +40 °C
	Relative Humidity	20~80%RH (Non-condensing)
	Vibration	Less than 4.9m/s <sup>2</sup> (0.5G)
	Altitude	1000m or less
	Others	To be no electric noise factor near.
Power Supply		3.0KVA

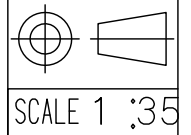
This table is written in SI units.  
 But numbers in ( ) are written in Gravity units.  
 Repetitive Positioning Accuracy is based on ISO 9283.  
 The robot position shown in this drawing is the original position  
 Cleanliness is for reference of the manipulator  
 at the operating pressure, not a guaranteed.

Note1 : You can put The Pressure switch unit (Delivered with the manipulator) anywhere except a manipulator moving area.  
 (The allowable length of air tubes between manipulator and pressure switch unit is 20 meters at a maximum.)  
 Note2 : Refer to Dimension Diagram of Pressure switch unit (Delivered with the manipulator), Dwg. No. "HW1386250".  
 Note3 : Cable install Position is X or Y or Z.

type	Note/Explosionproof authentication
YR-MHP045L-A00	L-Type/TIIS
YR-MHP045L-B00	L-Type/FM
YR-MHP045L-E00	L-Type/Korea
YR-MHP045L-G00	L-Type/Taiwan

Note:  
 1.All rights reserved.  
 2.Please note that the data is subject to be deleted without advance notice.  
 3.No warranty is given in relation to the data including the specification.  
 4.We are not responsible for any damages or loss caused by the use of the data.

FOR STUDY PURPOSE ONLY



**YASKAWA**  
 株式会社 安川電機

Reference Drawing

TITLE MOTOMAN-MHP45L  
 DIMENSION DIAGRAM

DRWN DATE Dec.11.'18  
 DWG.NO. HW1386183 1/2

SIZE A3

