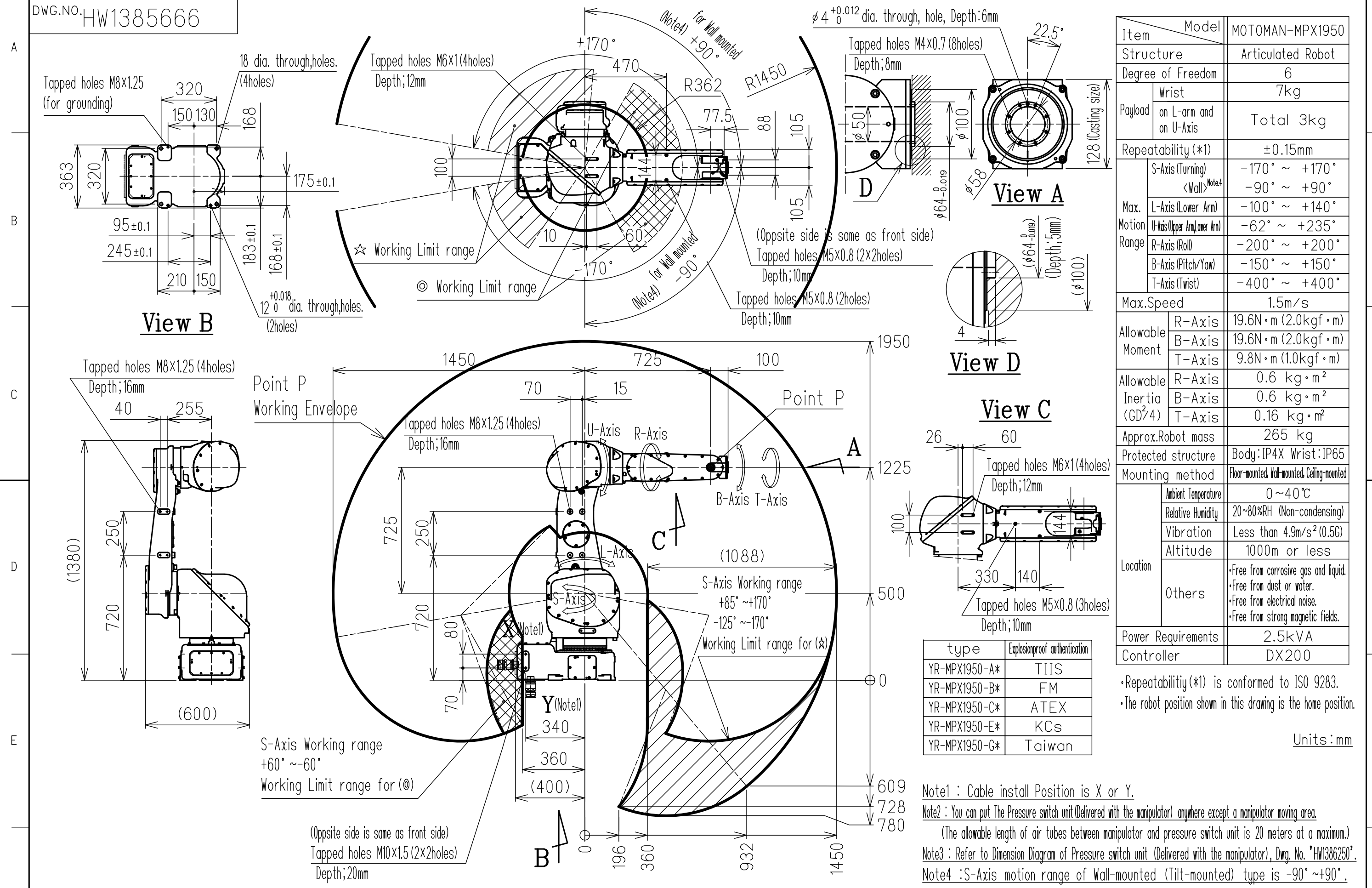


DWG.NO. HW1385666



Item	Model	MOTOMAN-MPX1950
Structure	Articulated Robot	
Degree of Freedom	6	
Payload	Wrist	7kg
	on L-arm and on U-Axis	Total 3kg
Repeatability (*1)	±0.15mm	
Max. Motion Range	S-Axis (Turning)	-170° ~ +170°
	<Wall> Note4	-90° ~ +90°
	L-Axis (Lower Arm)	-100° ~ +140°
	U-Axis (Upper Arm, Lower Arm)	-62° ~ +235°
	R-Axis (Roll)	-200° ~ +200°
B-Axis (Pitch/Yaw)	-150° ~ +150°	
	T-Axis (Twist)	-400° ~ +400°
Max.Speed	1.5m/s	
Allowable Moment	R-Axis	19.6N·m (2.0kgf·m)
	B-Axis	19.6N·m (2.0kgf·m)
	T-Axis	9.8N·m (1.0kgf·m)
Allowable Inertia (GD ² /4)	R-Axis	0.6 kg·m ²
	B-Axis	0.6 kg·m ²
	T-Axis	0.16 kg·m ²
Approx.Robot mass	265 kg	
Protected structure	Body:IP4X Wrist:IP65	
Mounting method	Floor-mounted, Wall-mounted, Ceiling-mounted	
Location	Ambient Temperature	0~40°C
	Relative Humidity	20~80%RH (Non-condensing)
	Vibration	Less than 4.9m/s ² (0.5G)
	Altitude	1000m or less
Others	<ul style="list-style-type: none"> Free from corrosive gas and liquid. Free from dust or water. Free from electrical noise. Free from strong magnetic fields. 	
	Power Requirements	2.5kVA
Controller	DX200	

type	Explosionproof authentication
YR-MPX1950-A*	TIIS
YR-MPX1950-B*	FM
YR-MPX1950-C*	ATEX
YR-MPX1950-E*	KCs
YR-MPX1950-G*	Taiwan

Note1 : Cable install Position is X or Y.
 Note2 : You can put The Pressure switch unit (Delivered with the manipulator) anywhere except a manipulator moving area.
 (The allowable length of air tubes between manipulator and pressure switch unit is 20 meters at a maximum.)
 Note3 : Refer to Dimension Diagram of Pressure switch unit (Delivered with the manipulator), Dwg. No. "HW1386250".
 Note4 : S-Axis motion range of Wall-mounted (Tilt-mounted) type is -90° ~ +90°.

Note:
 1.All rights reserved.
 2.Please note that the data is subject to be deleted without advance notice.
 3.No warranty is given in relation to the data including the specification.
 4.We are not responsible for any damages or loss caused by the use of the data.

FOR STUDY PURPOSE ONLY

SCALE 1:20

YASKAWA
 株式会社 安川電機

Reference Drawing

TITLE MOTOMAN-MPX1950
 DIMENSION DIAGRAM

DRWN DATE Dec.11.' 17
 DWG.NO. HW1385666