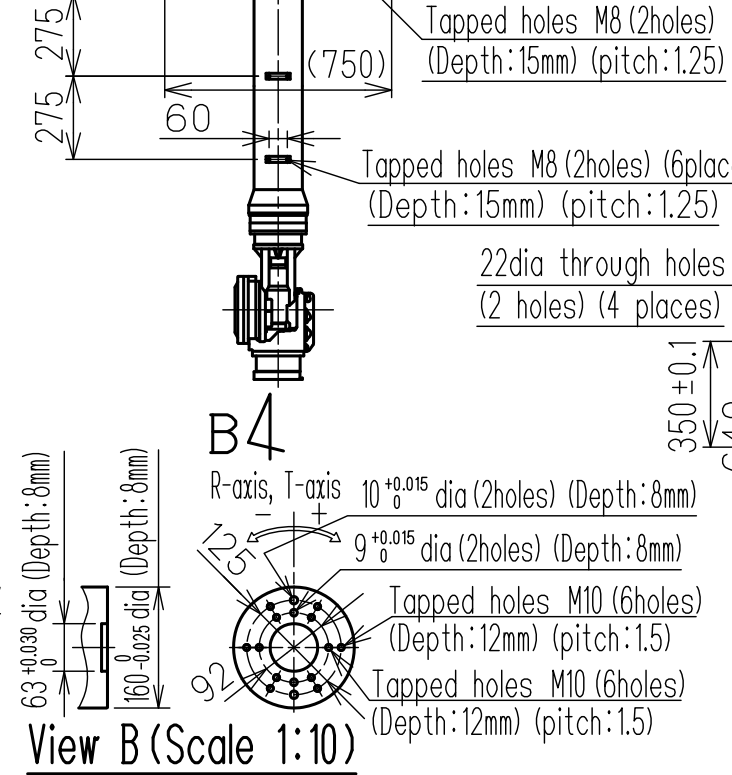
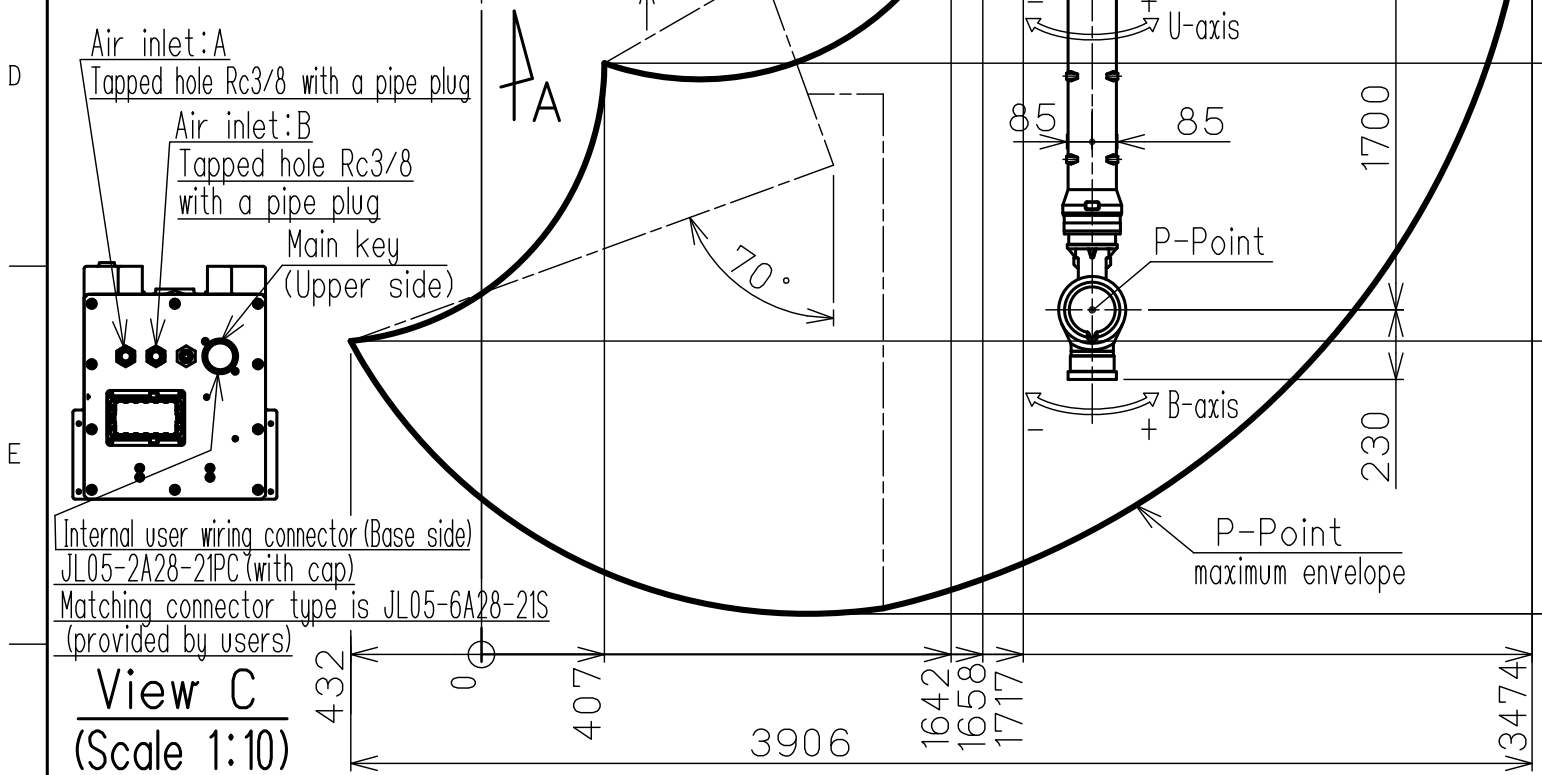
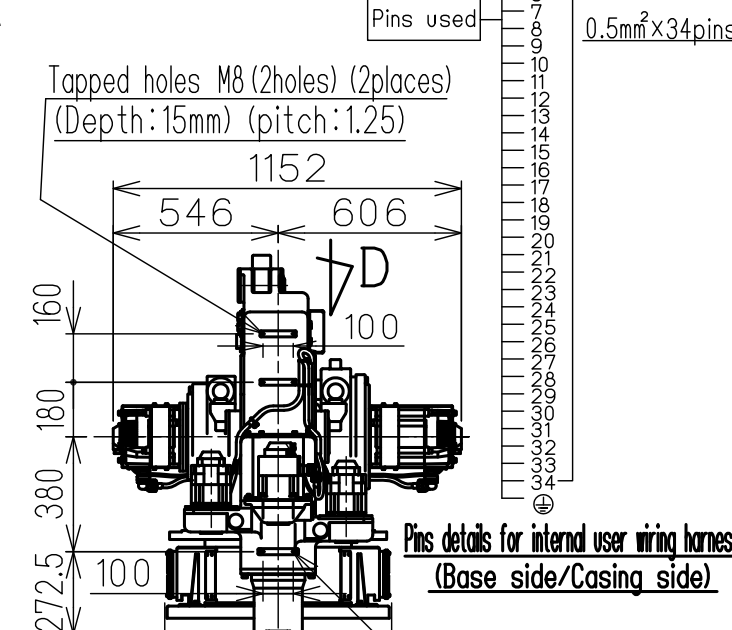
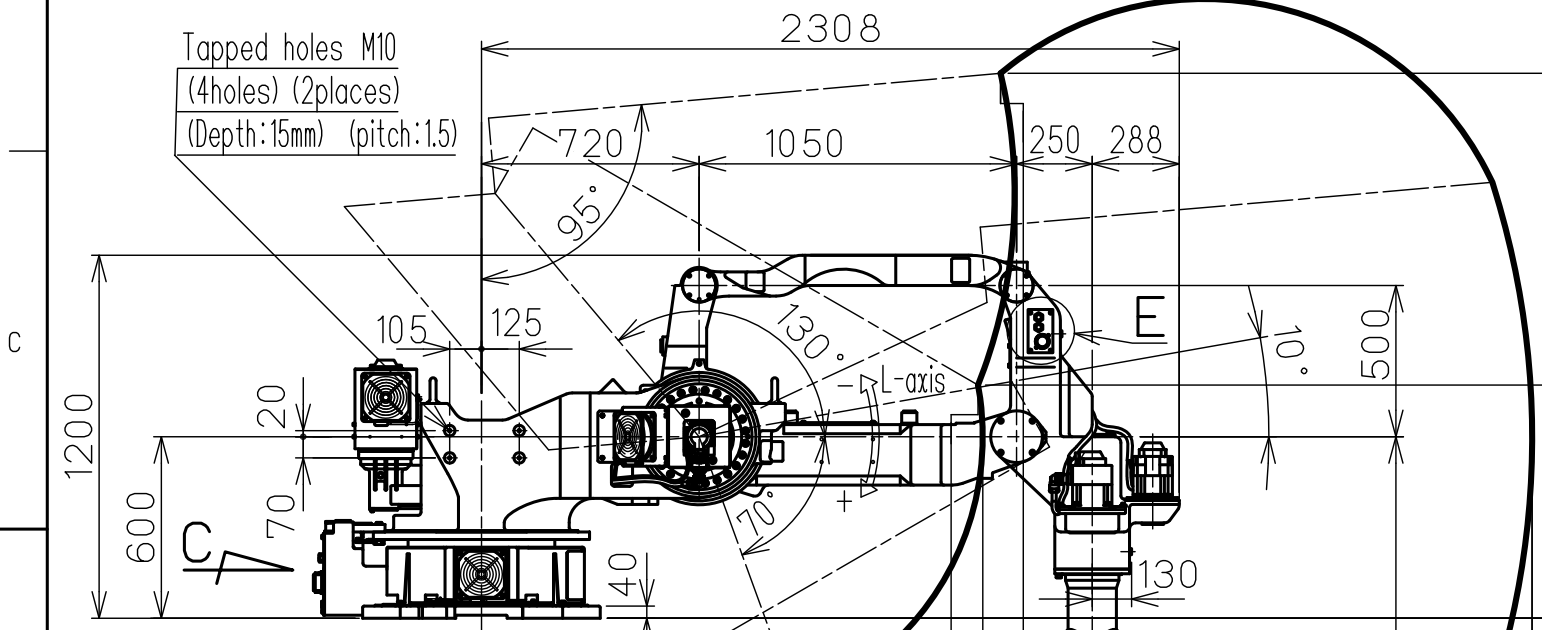
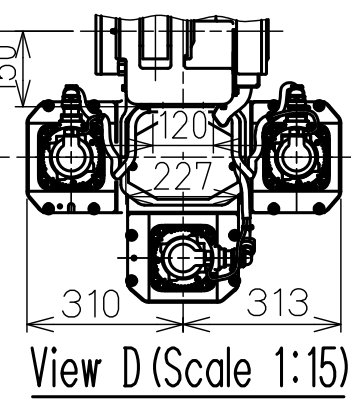
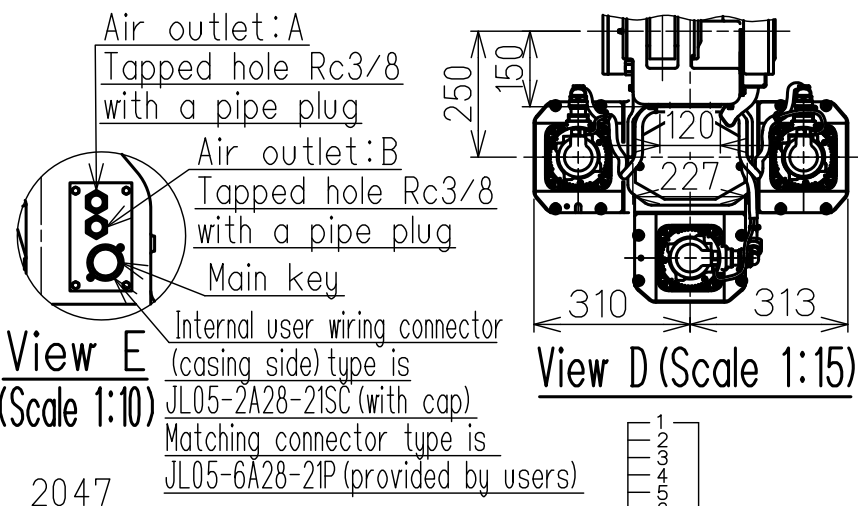
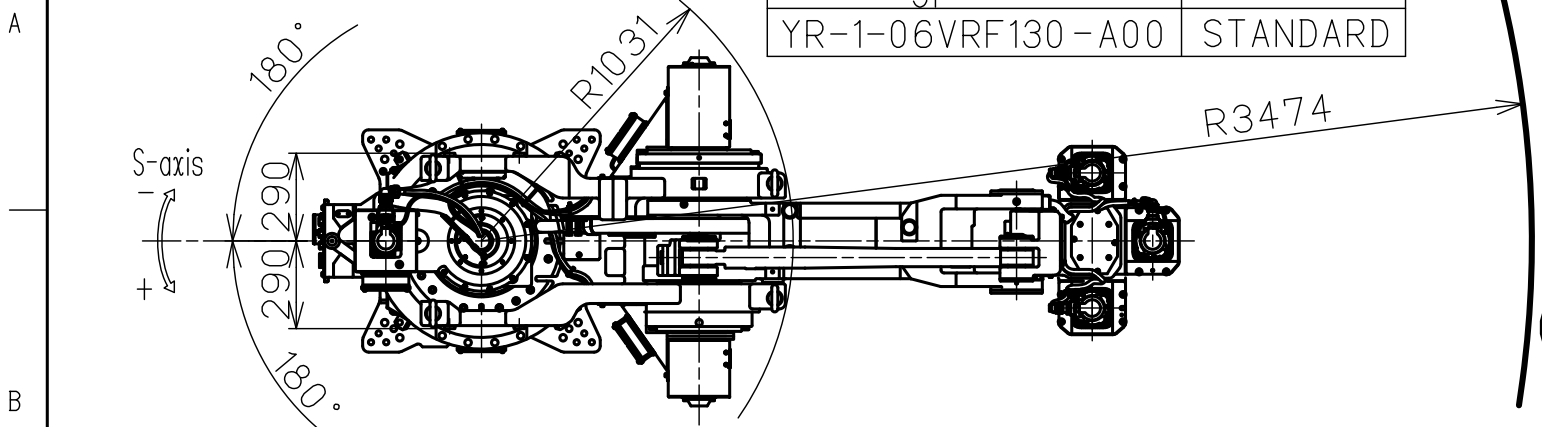


DWG.NO. HW1385438

Type	Note
YR-1-06VRF130-A00	STANDARD

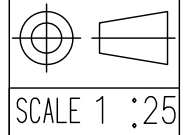


Item	Model	MOTOMAN-PH130RF
Configuration		Vertically articulated
Degree of Freedom		6
Payload	Wrist	130 kg
	On U-arm	10 kg
Repeatability (※1)		0.3 mm
Range of Motion	S-Axis (Turning)	-180° - +180°
	L-Axis (Lower Arm)	-130° - +70°
	U-Axis (Upper Arm)	-70° - +95°
	R-Axis (Roll)	-360° - +360°
	B-Axis (Pitch/Yaw)	-130° - +130°
Max Speed	T-Axis (Twist)	-360° - +360°
	S-Axis	1.92 rad/s, 110°/s
	L-Axis	1.92 rad/s, 110°/s
	U-Axis	1.92 rad/s, 110°/s
	R-Axis	3.75 rad/s, 215°/s
Allowable Moment	B-Axis	3.14 rad/s, 180°/s
	T-Axis	5.23 rad/s, 300°/s
	R-Axis	735 N·m (75 kgf·m)
Allowable Inertia (GD ² /4)	B-Axis	735 N·m (75 kgf·m)
	T-Axis	421 N·m (43 kgf·m)
	R-Axis	45 kg·m ²
Approx. Robot mass		1560 kg
Protected structure		Body: IP30 Wrist: IP67
Mounting method		Shelf-mounted
Allowable Conditions	Temperature	0 to +45°C
	Humidity	20 to 80%RH (Non-condensing)
	Vibration	9.8m/s ² (1.0G) or less
	Altitude	1000m or less
Others	<ul style="list-style-type: none"> Free from explosive or corrosive gas and liquid. Free from dust, soot, oil, or water. Free from electrical noise. Free from strong magnetic fields. 	
	Power Requirements	
Controller		YRC1000

※1 Repeatability is conformed to ISO 9283.
 ※2 The manipulator is in the home position.
 Units: mm

Note:
 1. All rights reserved.
 2. Please note that the data is subject to be deleted without advance notice.
 3. No warranty is given in relation to the data including the specification.
 4. We are not responsible for any damages or loss caused by the use of the data.

FOR STUDY PURPOSE ONLY



YASKAWA
 株式会社 安川電機

Reference Drawing

TITLE MOTOMAN-PH130RF
 DIMENSION DIAGRAM

DRWN DATE Oct. 18.' 17
 DWG.NO. HW1385438

SIZE A3