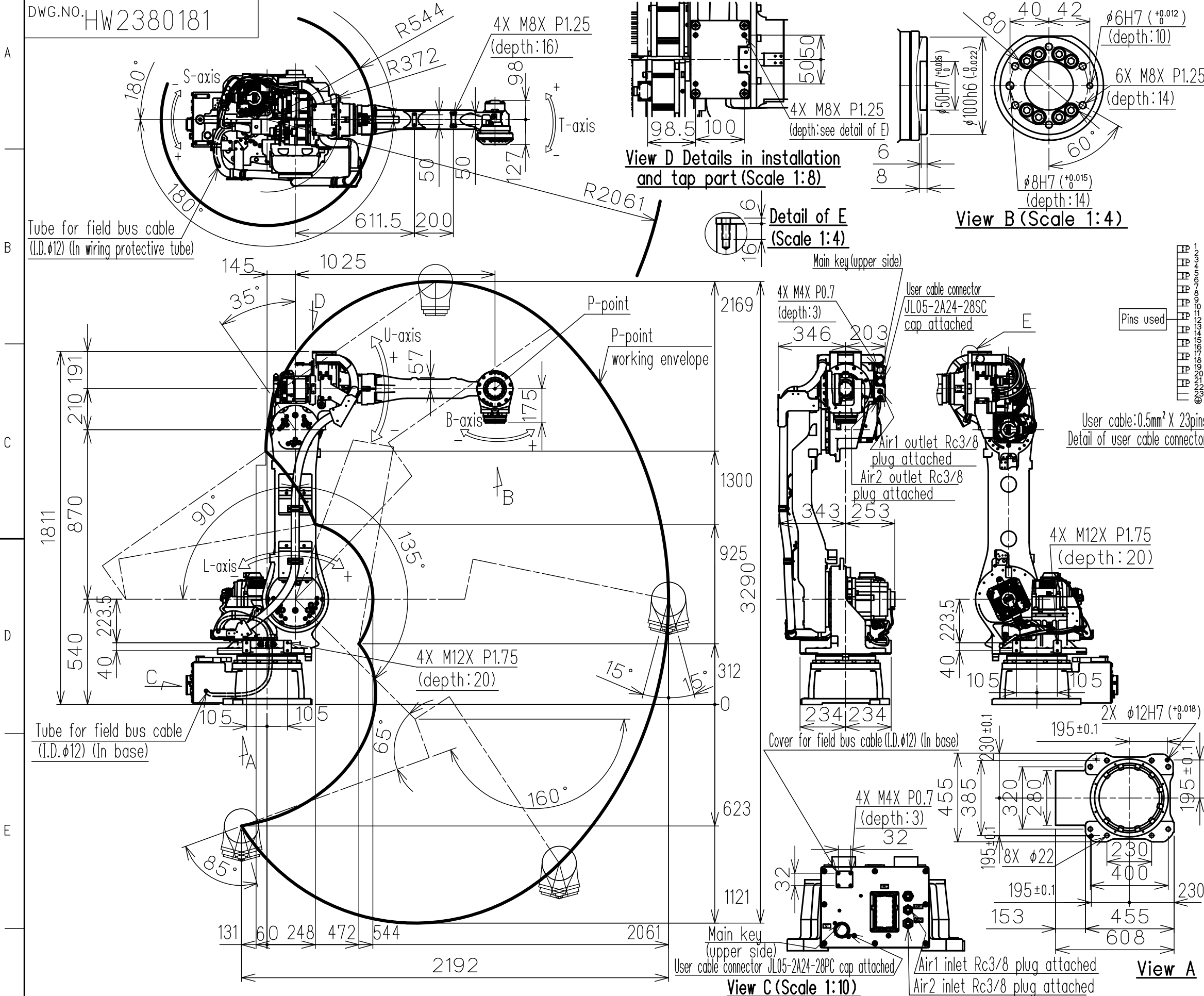


DWG.NO. HW2380181



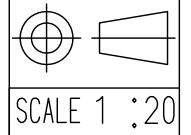
Item	Model	MOTOMAN-PL80
Configuration	Vertically articulated	
Degree of freedom	5	
Payload	Wrist	80kg
	U-arm	10kg
Repeatability (*1)	0.03mm	
Range of motion	S-axis	-180° - +180°
	L-axis	-90° - +135°
	U-axis	-160° - +35°
	B-axis (*2)	-15° - +15°
	T-axis	-360° - +360°
Maximum speed	S-axis	3.14rad/s, 180°/s
	L-axis	3.14rad/s, 180°/s
	U-axis	3.14rad/s, 180°/s
	B-axis	3.14rad/s, 180°/s
	T-axis	8.72rad/s, 500°/s
Allowable moment	B-axis	78.4N·m (8kgf·m)
	T-axis	20.5N·m (2.1kgf·m)
Allowable inertia (GD <sup>2</sup> /4)	B-axis	48kg·m <sup>2</sup>
	T-axis	25kg·m <sup>2</sup>
Mass	565kg	
Protection rating	Body:IP54 Wrist:IP67	
Mounting method	Floor-mounted	
Ambient conditions	Temperature	0°C - +45°C
	Humidity	20%RH - 80%RH (No-condensing)
	Vibration acceleration	4.9m/s <sup>2</sup> (0.5G) or less
	Altitude	1000m or less
	Flatness for installation	0.5mm or less
	Others	<ul style="list-style-type: none"> <li>Free from dirt, dust, oil soot, or water</li> <li>Free from explosive and corrosive gas or liquid</li> <li>Free from excessive electrical noise (plasma)</li> <li>Free from strong magnetic field</li> </ul>
Power requirements	4.5KVA	
Applicable controller	YRC1000	

\*1 Repeatability conforms to ISO 9283.  
 \*2 The range of motion of the B-axis is an angle in the downward vertical direction. In some postures, however, the motion of the B-axis may be restricted depending on the angle with respect to the upper arm.  
 \*3 The manipulator is in the home position in this drawing.

Type	Specification	Units: mm
YR-1-05VX80-A00	Standard	

注記  
 1.本データの変更、転載を禁止いたします。  
 2.本データは、予告なしに、削除する場合がございます。  
 3.本データは仕様を保証するものではありません。  
 4.本データの使用によって発生した一切の損害についての責任は負いかねます。

営業用資料



**YASKAWA**  
 株式会社 安川電機

参考図

TITLE MOTOMAN-PL80  
 DIMENSION DIAGRAM

DRWN DATE May.10.'21  
 DWG.NO. HW2380181