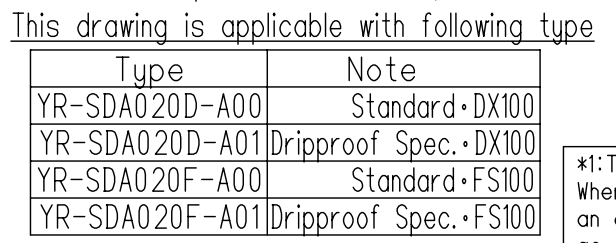
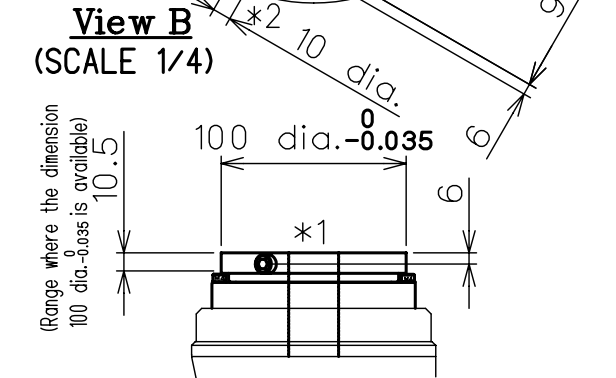
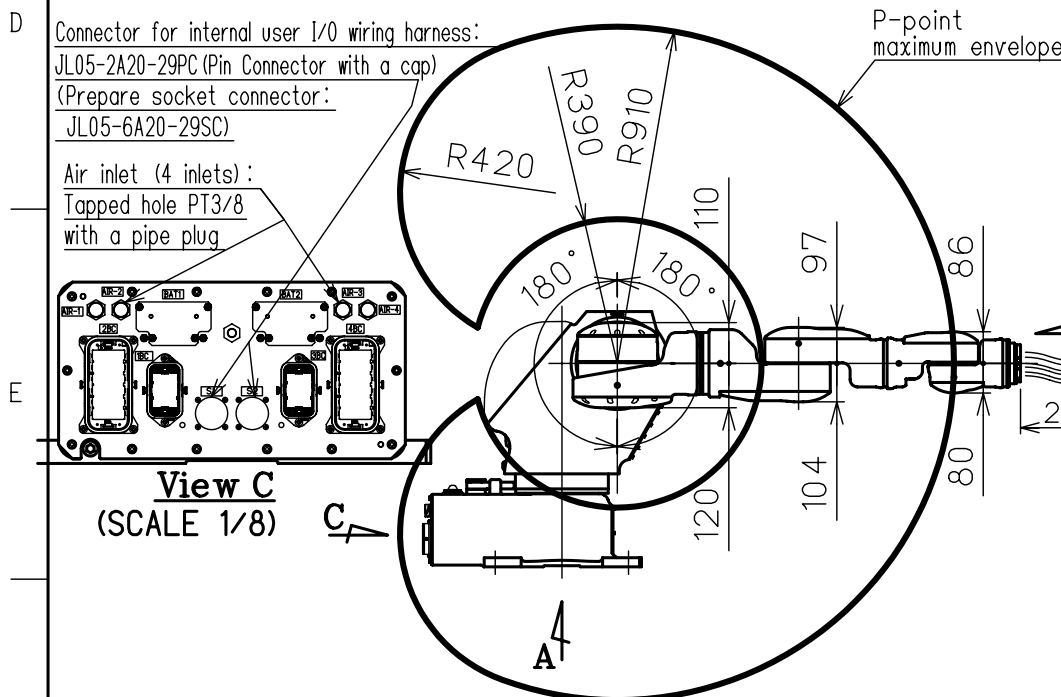
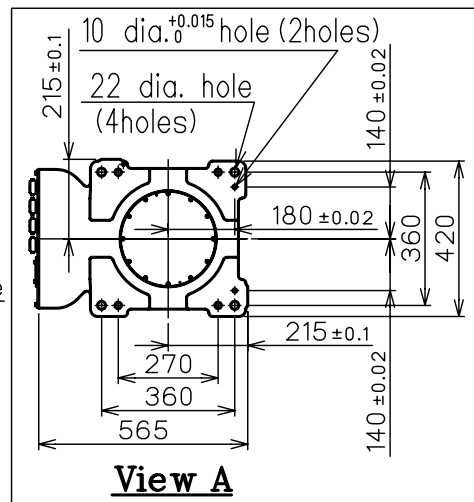
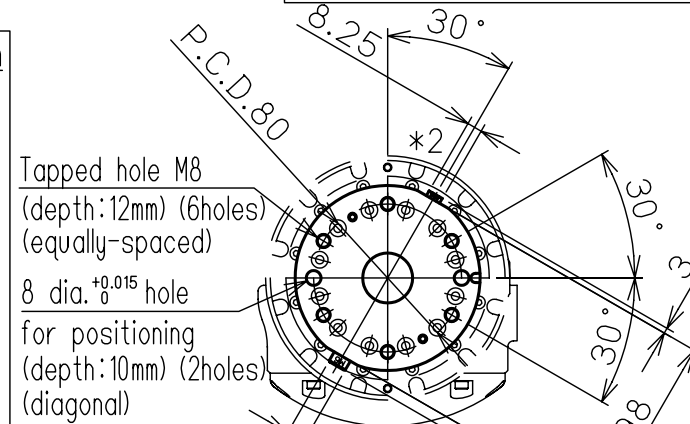
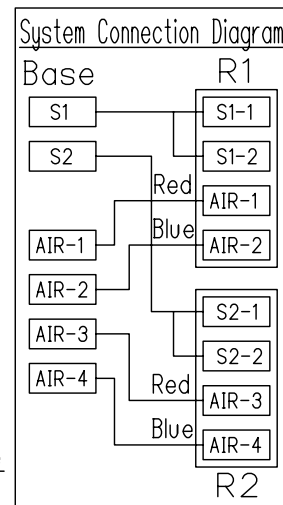
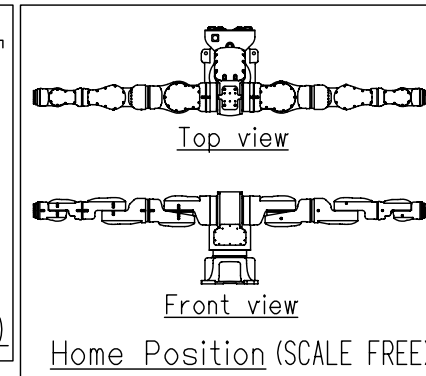
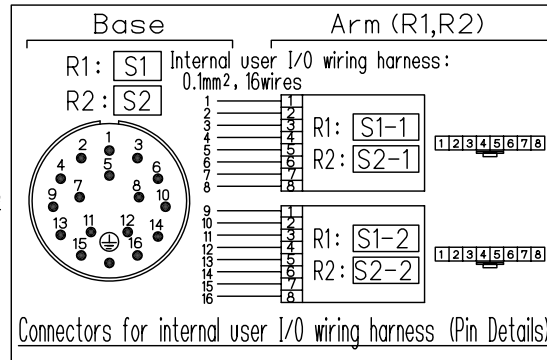
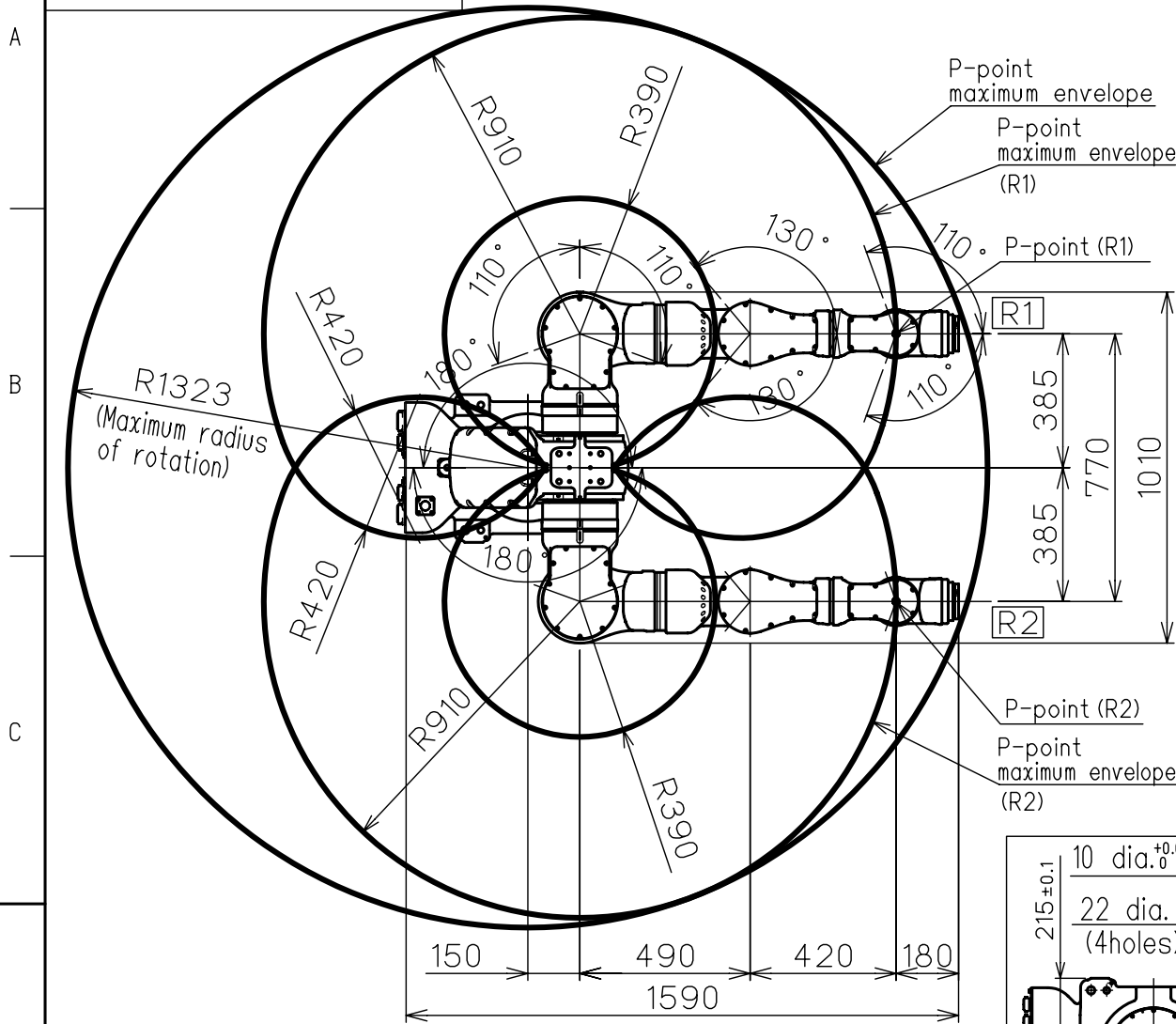


DWG.NO. HW0389843



Item	Model	MOTOMAN-SDA20D, SDA20F
Configuration		Articulated
Degree of Freedom		7 axes for the left arm (R1); 7 axes for the right arm (R2); 1 turning axis
Payload		20kg/arm
Repetitive Positioning Accuracy *3		±0.1mm
Range of Motion	Rotation-axis	-180° - +180°
	S-axis (lifting)	-180° - +180°
	L-axis (lower arm)	-110° - +110°
	E-axis (lower arm twist)	-170° - +170°
	U-axis (upper arm)	-130° - +130°
	R-axis (upper arm twist)	-180° - +180°
	B-axis (wrist pitch/yaw)	-110° - +110°
T-axis (wrist twist)	-180° - +180°	
Maximum Speed	Rotation-axis	2.18rad/s (125° /s)
	S-axis	2.27rad/s (130° /s)
	L-axis	2.27rad/s (130° /s)
	E-axis	2.97rad/s (170° /s)
	U-axis	2.97rad/s (170° /s)
	R-axis	3.49rad/s (200° /s)
	B-axis	3.49rad/s (200° /s)
T-axis	6.98rad/s (400° /s)	
Allowable Moment	R-axis	58.8N·m (6.0kgf·m)
	B-axis	58.8N·m (6.0kgf·m)
	T-axis	29.4N·m (3.0kgf·m)
Allowable Inertia (GD ² /4)	R-axis	4.0kg·m ²
	B-axis	4.0kg·m ²
	T-axis	2.0kg·m ²
Mass		380 kg
Ambient Conditions	Temperature	0-40°C
	Humidity	20-80%RH
	Vibration acceleration	4.9m/s ² (0.5G) or less
	Others	•Free from corrosive gas or liquid, or explosive gas •Free from exposure to water, oil, or dust •Free from excessive electrical noise (plasma)
Power Capacity	DX100	3.5 kVA
	FS100	3.0 kVA

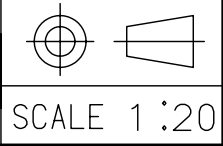
SI units are used in this table. However, gravitational unit is used in ().
*3: Conformed to ISO9283

FOR STUDY PURPOSE ONLY

*1: The flange is equipped with a cable through hole. When mounting equipment such as an attachment, ensure that no foreign liquid, oil, or dust go into hole.
*2: A bolt is mounted for T-axis grease replenished. When attaching an attachment to 100 dia. -0.035/0 part of the T-axis, enough space for the grease zerk (A-MT6X1) is required to the shape of the attachment.

The drip-proof specification has a hole on its wrist flange to pass cables as with the standard specification. When mounting equipment such as attachment, perform drip-proof treatment on the flange surface.
The optional waterproof wrist flange is available.
<NOTE> The connectors for internal user I/O wiring harness are not drip-proofed; depending on the ambient conditions, perform drip-proof treatment after connecting the wiring harness. (E.g., treating the connections with waterproof tape, or connecting the wiring harness inside the drip-proof box.)

Note:
1. All rights reserved.
2. Please note that the data is subject to be deleted without advance notice.
3. No warranty is given in relation to the data including the specification.
4. We are not responsible for any damages or loss caused by the use of the data.



Reference Drawing

TITLE MOTOMAN-SDA20D, SDA20F
DIMENSION DIAGRAM

DWG.NO. HW0389843

SIZE A3