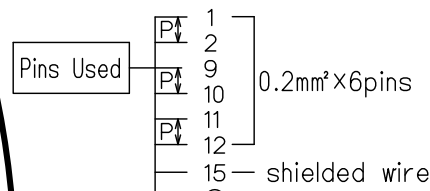
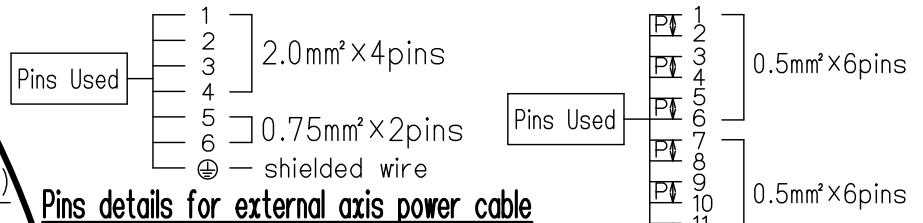
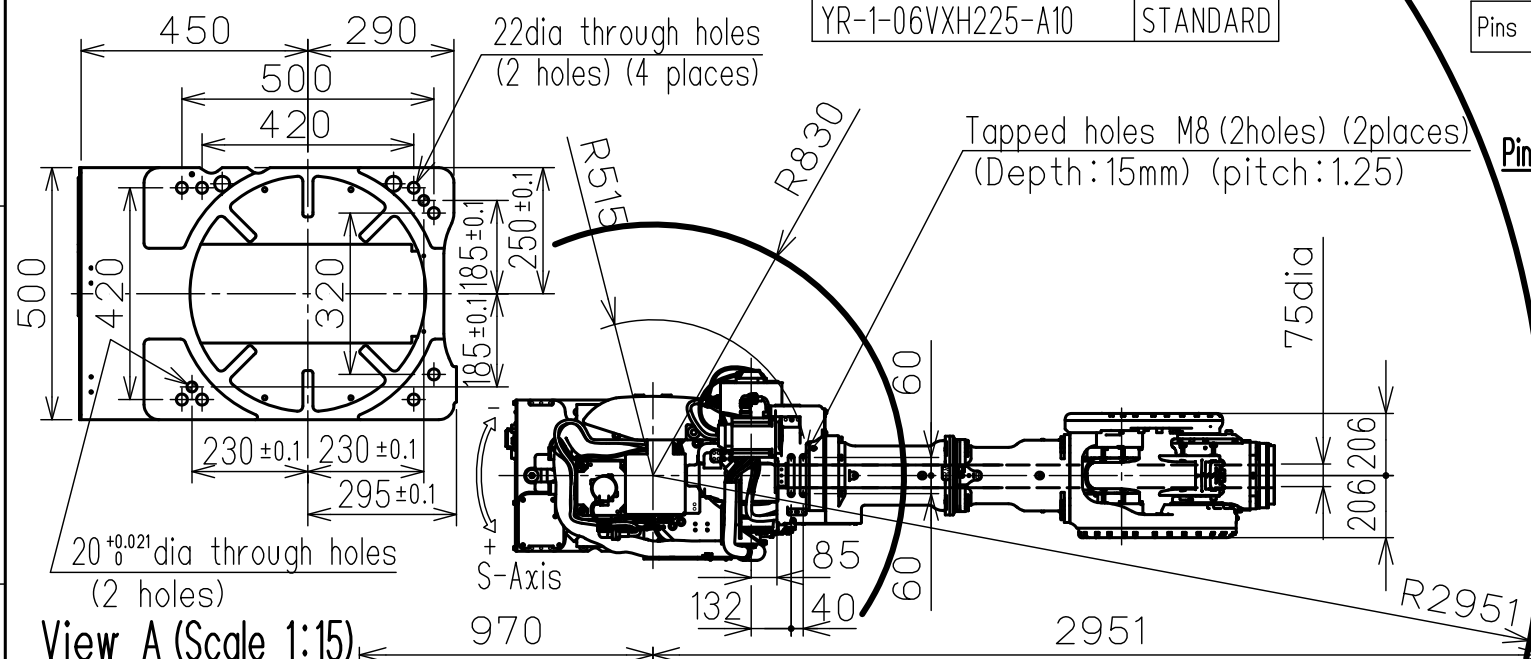
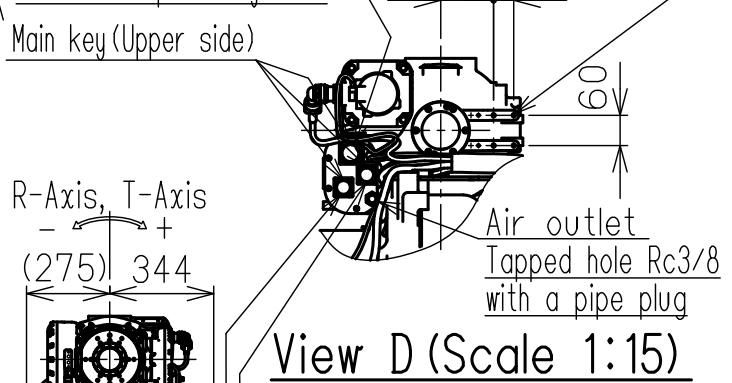
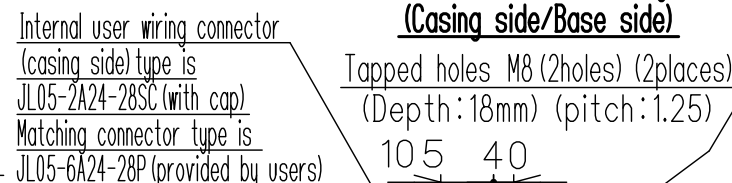


DWG.NO. HW1386335

Type	Note
YR-1-06VXH225-A10	STANDARD



Pins details for internal user wiring harness (Casing side/Base side)

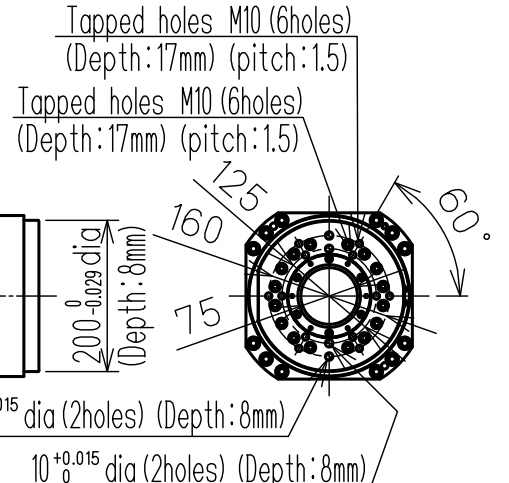


Connector for the external axis (power cable) type is CE01-2A20-15S (D69) -D (with cap)
Matching connector type is JL05-6A20-15P (provided by users)

Connector for the external axis (encoder cable) type is JL05-2A20-29SC (with cap)
Matching connector type is JL05-6A20-29P (provided by users)

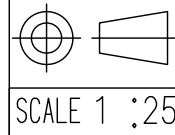
Item	Model	MOTOMAN-SP225H-135
Configuration		Vertically articulated
Degree of Freedom		6
Payload	Wrist	135kg
	On U-arm	30kg
Repeatability (※1)		0.05 mm
Range of Motion	S-Axis (Turning)	-180° - +180°
	L-Axis (Lower Arm)	-60° - +76°
	U-Axis (Upper Arm)	-86° - +90°
	R-Axis (Roll)	-210° - +210°
	B-Axis (Pitch/Yaw)	-130° - +130°
	T-Axis (Twist)	-360° - +360°
Max Speed	S-Axis	2.18 rad/s, 125°/s
	L-Axis	2.01 rad/s, 115°/s
	U-Axis	2.01 rad/s, 115°/s
	R-Axis	3.18 rad/s, 182°/s
	B-Axis	3.05 rad/s, 175°/s
	T-Axis	4.63 rad/s, 265°/s
Allowable Moment	R-Axis	883 N·m (90.1kgf·m)
	B-Axis	883 N·m (90.1kgf·m)
	T-Axis	520 N·m (53.1kgf·m)
Allowable Inertia (GD²/4)	R-Axis	85 kg·m²
	B-Axis	85 kg·m²
	T-Axis	40 kg·m²
Approx. Robot mass		1110kg
Protected structure		Body: IP54 Wrist: IP65
Mounting method		Floor-mounted
Ambient Conditions	Temperature	0°C to +45°C
	Humidity	20%RH to 80%RH (Non-condensing)
	Vibration	4.9m/s² (0.5G) or less
	Altitude	1000m or less
	Flatness for installation	0.5mm or less
	Others	<ul style="list-style-type: none"> Free from dirt, dust, oil, soot, or water. Free from explosive and corrosive gas or liquid. Free from excessive electrical noise (plasma). Free from strong magnetic fields.
Power Requirements		5.0KVA
Controller		YRC1000

※1 Repeatability is conformed to ISO 9283.
※2 The manipulator is in the home position.
Units: mm



Note:
1.All rights reserved.
2.Please note that the data is subject to be deleted without advance notice.
3.No warranty is given in relation to the data including the specification.
4.We are not responsible for any damages or loss caused by the use of the data.

FOR STUDY PURPOSE ONLY



YASKAWA
株式会社 安川電機

Reference Drawing

TITLE MOTOMAN-SP225H-135
DIMENSION DIAGRAM

DRWN DATE Jul. 31, '19
DWG.NO. HW1386335

SIZE A3