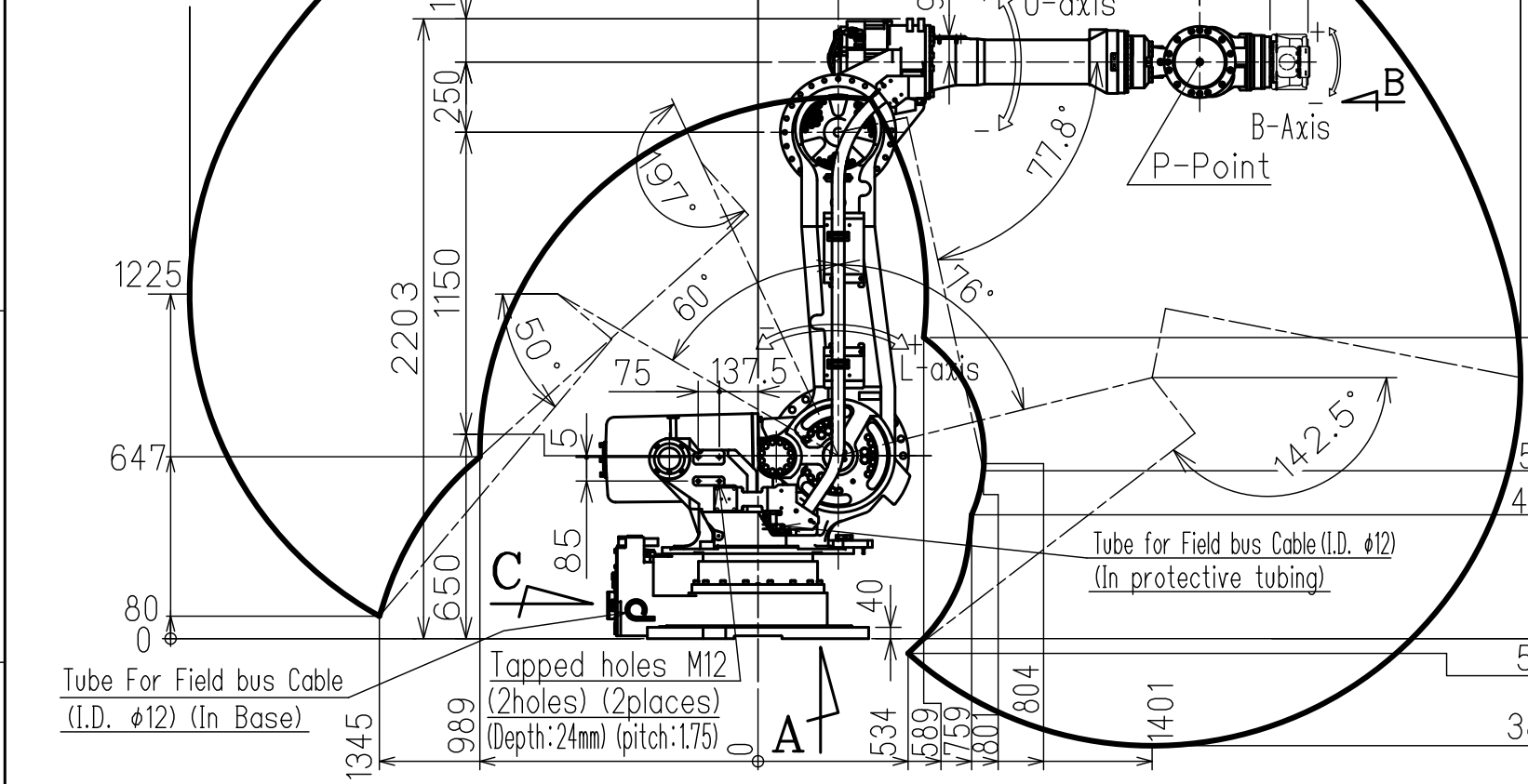
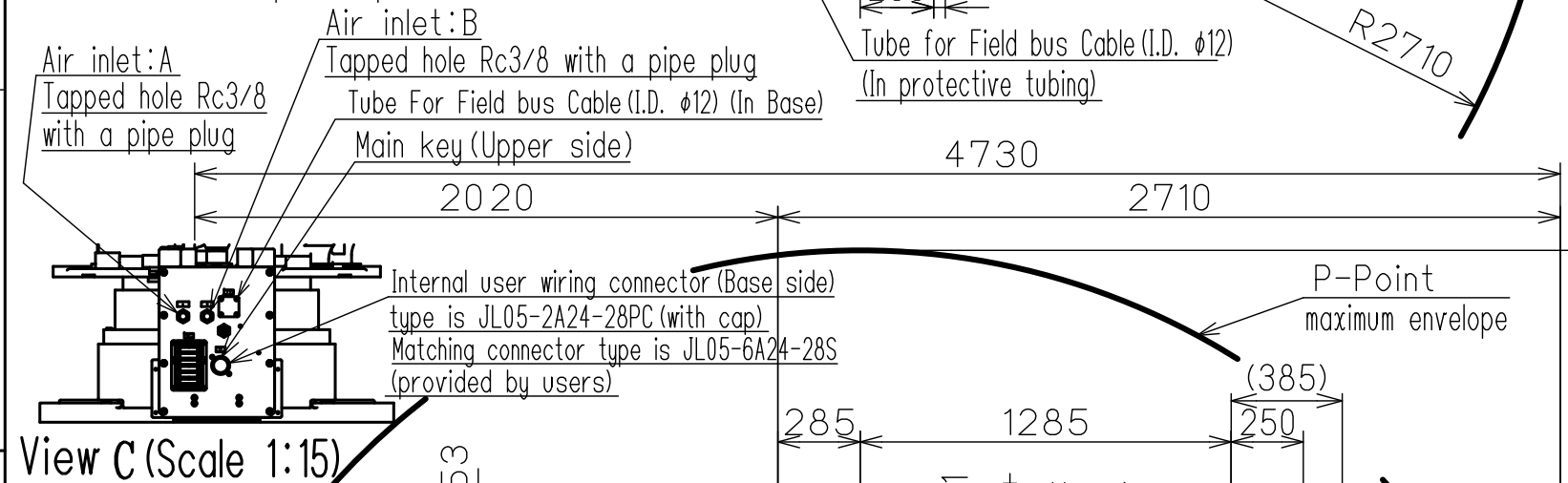
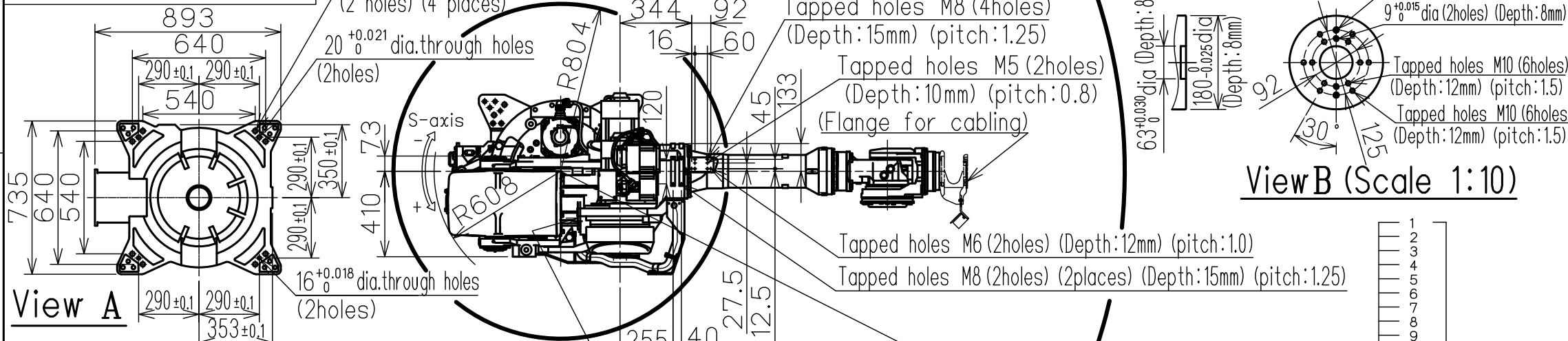
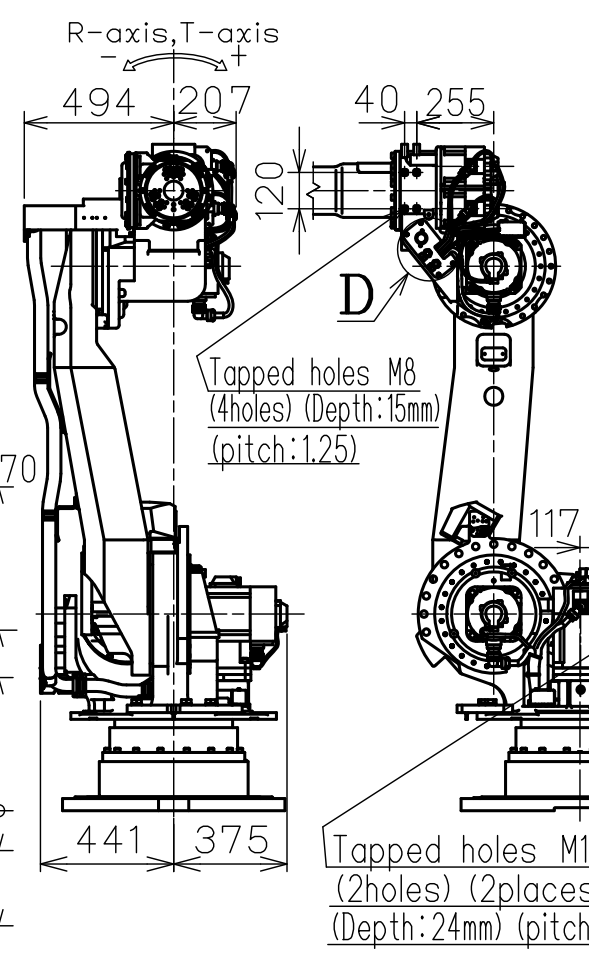
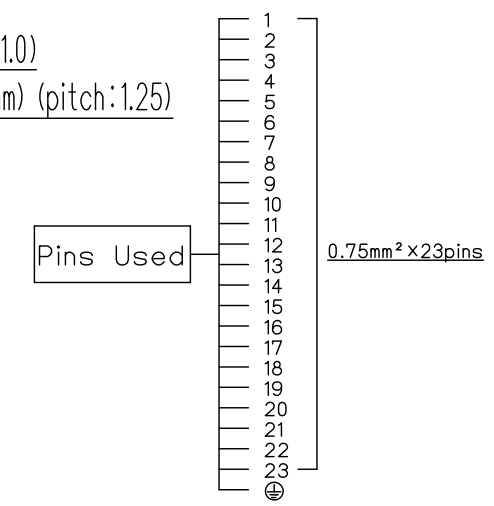


DWG.NO. HW1385432



View B (Scale 1:10)



| Item                                   | Model                     | MOTOMAN-SP235   |
|--|---------------------------|---|
| Flange for Cabling                     | not-equipped              | equipped  |
| Configuration                          | Vertically articulated    |   |
| Degree of Freedom                      | 6                         |   |
| Payload                                | Wrist                     | 250 kg  |
|  | On U-arm                  | 235 kg  |
| Repeatability (*1)                     | 0.05 mm                   |   |
| Range of Motion                        | S-Axis (Turning)          | -180° - +180°   |
|  | L-Axis (Lower Arm)        | -60° - +76°   |
|  | U-Axis (Upper Arm)        | -77.8° - +197°  |
|  | R-Axis (Roll)             | -360° - +360°   |
|  | B-Axis (Pitch/Yaw)        | -205° - +205°   |
| Max Speed                              | B-Axis                    | 2.09 rad/s, 120°/s  |
|  | T-Axis                    | 2.09 rad/s, 120°/s  |
| Allowable Moment                       | R-Axis                    | 1385 N·m (141 kgf·m)  |
|  | B-Axis                    | 1385 N·m (141 kgf·m)  |
|  | T-Axis                    | 735 N·m (75 kgf·m)  |
| Allowable Inertia (GD <sup>2</sup> /4) | R-Axis                    | 317 kg·m <sup>2</sup>   |
|  | B-Axis                    | 315 kg·m <sup>2</sup>   |
|  | T-Axis                    | 317 kg·m <sup>2</sup>   |
| Approx. Robot mass                     | 1345kg                    |   |
| Protected structure                    | Body:IP54 Wrist:IP67      |   |
| Mounting method                        | Floor-mounted             |   |
| Ambient Conditions                     | Temperature               | 0°C to +45°C  |
|  | Humidity                  | 20%RH to 80%RH (Non-condensing)   |
|  | Vibration                 | 4.9m/s <sup>2</sup> (0.5G) or less  |
|  | Altitude                  | 1000m or less   |
|  | Flatness for installation | 0.5mm or less   |
| Power Requirements                     | Others                    | •Free from dirt,dust,oil soot,or water.<br>•Free from explosive and corrosive gas or liquid.<br>•Free from excessive electrical noise (plasma).<br>•Free from strong magnetic fields. |
|  | Controller                | 5.0KVA YRC1000  |

\*1 Repeatability is conformed to ISO 9283. Units:mm  
\*2 The manipulator is in the home position.

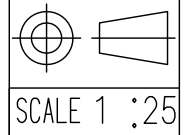
Internal user wiring connector (Casing side) type is JL05-2A24-28SC (with cap) Matching connector type is JL05-6A24-28P (provided by users)

Internal user wiring connector (Base side) type is JL05-2A24-28PC (with cap) Matching connector type is JL05-6A24-28S (provided by users)

| Type             | Note     |
|------------------|----------|
| YR-1-06VX250-A00 | STANDARD |

Note:  
1.All rights reserved.  
2.Please note that the data is subject to be deleted without advance notice.  
3.No warranty is given in relation to the data including the specification.  
4.We are not responsible for any damages or loss caused by the use of the data.

FOR STUDY PURPOSE ONLY



**YASKAWA**  
株式会社 安川電機

Reference Drawing

TITLE MOTOMAN-SP235  
DIMENSION DIAGRAM

DRWN DATE Oct.03.'17  
DWG.NO. HW1385432

SIZE A3