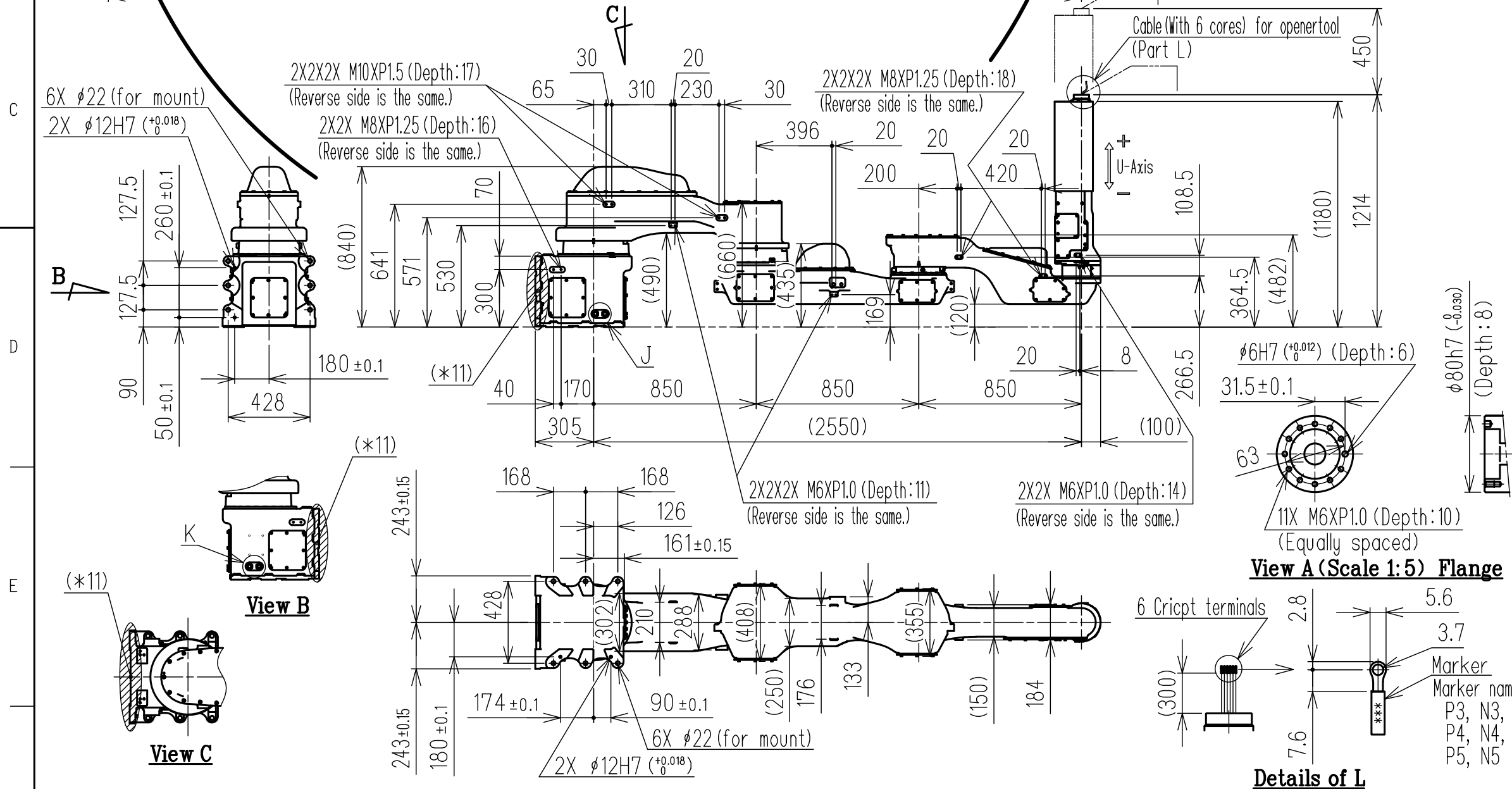
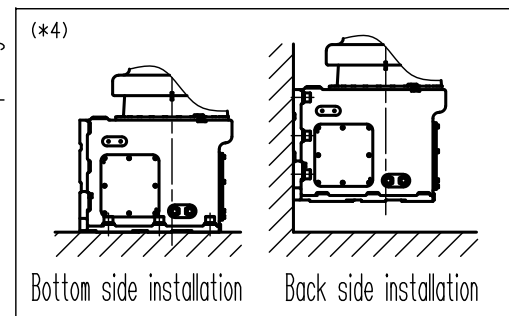
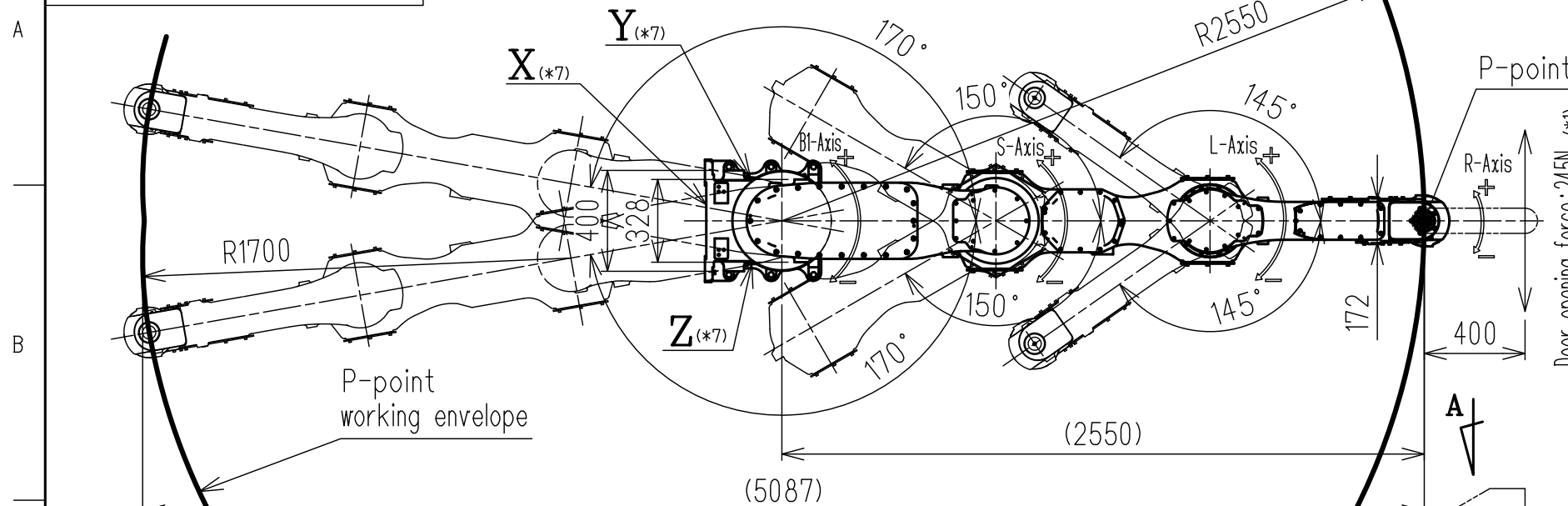


DWG.NO. HW2380542

TYPE	Explosionproof authentication
YR-MP0010L-A00	TIIS

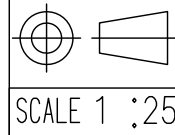
Item	Model	MOTOMAN-MP010L
Configuration		Horizontal articulated
Degree of freedom		5
Payload	Frange	10kg
	Body	Total 10kg
Door opening force (*1)		245N
Repeatability (*2)		0.15mm
Range of motion	B1-axis	-170° - +170°
	S-axis	-150° - +150°
	L-axis	-145° - +145°
	U-axis	0mm - 450mm
	R-axis	-200° - +200°
Maximum speed (*3)	B1-axis	2.27rad/s, 130°/s
	S-axis	2.27rad/s, 130°/s
	L-axis	2.27rad/s, 130°/s
	U-axis	500mm/s
	R-axis	4.36rad/s, 250°/s
Allowable moment		27N·m (2.75kgf·m)
Allowable inertia (GD ² /4)		1.00kg·m ²
Mass		550 kg
Protection rating		IP4X
Mouting method		Floor-mounted (*4)
Ambient conditions	Temperature	0°C-40°C
	Humidity	20%RH-80%RH (Non-condensing)
	Vibration acceleration	4.9m/s ² (0.5G) or less
	Altitude	1000m or less
	Flatness for installation	0.5mm or less
Others		<ul style="list-style-type: none"> Free from oil soot and water Free from corrosive gas and liquid Free from excessive electrical noise (plasma) Free from strong magnetic field
Power requirement (*5)		1.5kVA
Applicable controller		DX200



- *1 The load point of the door opening and closing force is within 400mm in the horizontal direction from the P-point.
 - *2 Repeatability conforms to ISO 9283.
 - *3 The maximum speed in this table is the available maximum value and will vary depending on the load, posture, or range of motion.
 - *4 The installation surface can be selected from the bottom and back side.
 - *5 The power requirement value is obtained using YASKAWA's in-house measurement conditions and will vary depending on the load, motion pattern, or cycle time.
 - *6 The posture in this drawing is in the home position.
 - *7 Cable install position is X, Y, or Z.
 - *8 The pressure switch unit (delivered with the manipulator) is installed outside the manipulator range of motion. (The allowable length of air tubes between manipulator and pressure switch unit is 20 meters at a maximum.)
 - *9 Purge air tube is connected at J or K.
 - *10 Refer to dimension diagram of pressure switch unit, Dwg. No. "HW1386250".
 - *11 Operating limits are set for the range where the manipulator interferes. However, some interference occurs between the power supply cable, the base and the arm.
- Units: mm

Note:
 1. All rights reserved.
 2. Please note that the data is subject to be deleted without advance notice.
 3. No warranty is given in relation to the data including the specification.
 4. We are not responsible for any damages or loss caused by the use of the data.

FOR STUDY PURPOSE ONLY



YASKAWA
 株式会社 安川電機

Reference Drawing

TITLE MOTOMAN-MP010L
 DIMENSION DIAGRAM

DRWN DATE Feb.09.'23
 DWG.NO. HW2380542

SIZE A3