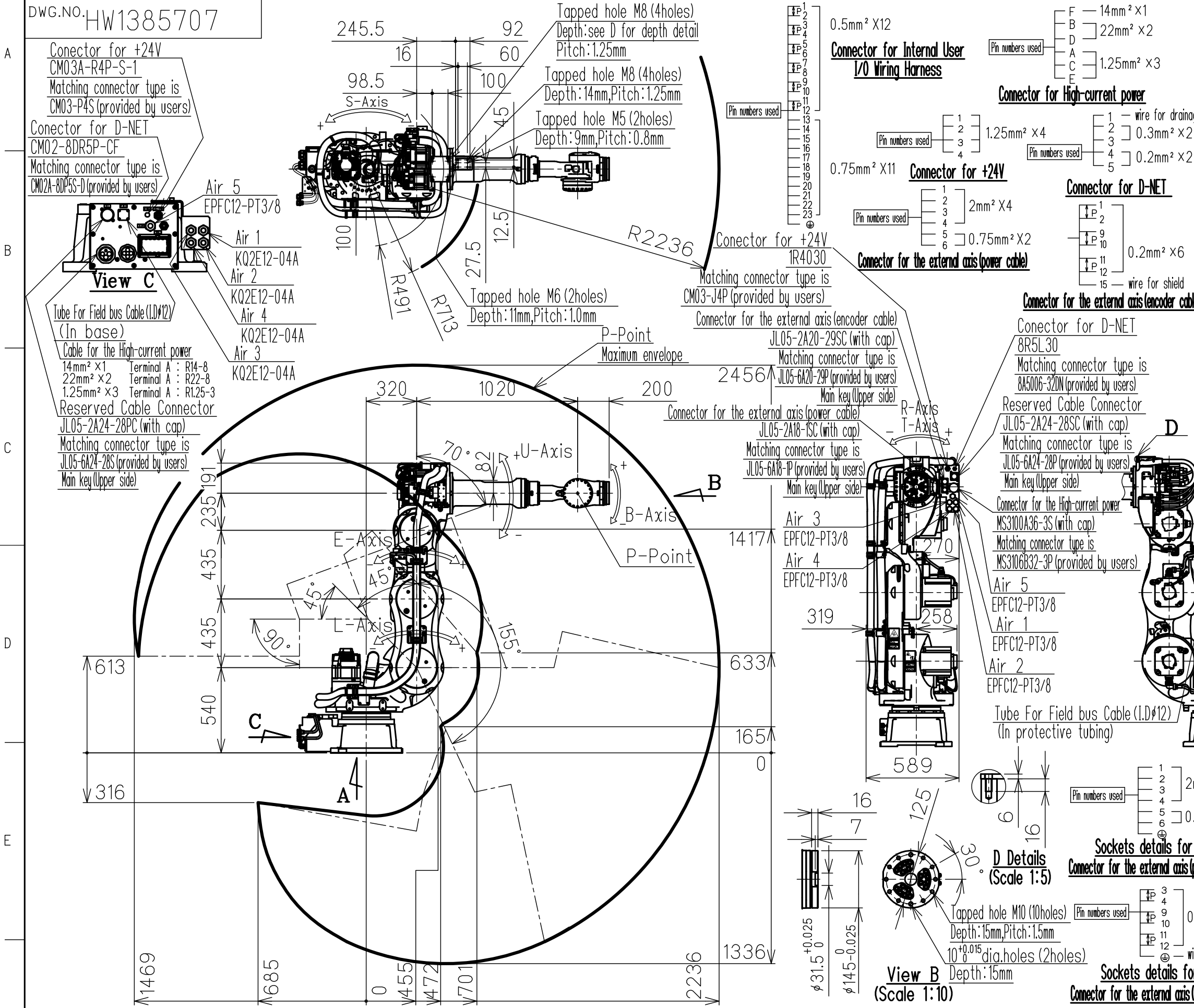


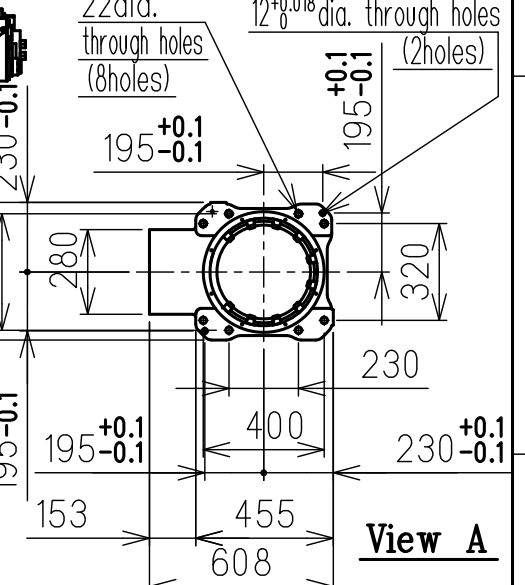
DWG.NO. HW1385707



Item	Model	MOTOMAN-GP110B
Configuration	Vertically articulated	
Degree of Freedom	7	
Payload	Wrist	110kg
	On-Uarm	10kg
Repeatability (*1)	0.04mm	
Range of Motion	S-Axis	-180° - +180°
	L-Axis	-45° - +155°
	E-Axis	-45° - +120°
	U-Axis	-70° - +90°
	R-Axis	-360° - +360°
	B-Axis	-125° - +125°
	T-Axis	-360° - +360°
Max Speed	S-Axis	2.45 rad/s, 140°/s
	L-Axis	1.92 rad/s, 110°/s
	E-Axis	1.92 rad/s, 110°/s
	U-Axis	2.27 rad/s, 130°/s
	R-Axis	3.05 rad/s, 175°/s
Allowable Moment	B-Axis	721N·m (73.5kgf·m)
	T-Axis	294N·m (30kgf·m)
	R-Axis	721N·m (73.5kgf·m)
Allowable Inertia (GD ² /4)	R-Axis	60kg·m ²
	B-Axis	60kg·m ²
	T-Axis	33.7kg·m ²
Approx. Robot mass	790kg	
Protected structure	Body: IP54 Wrist: IP67	
Mounting method	Floor-mounted	
Ambient Conditions	Temperature	0°C to +45°C
	Humidity	20%RH to 80%RH (Non-condensing)
	Vibration	4.9m/s ² (0.5G) or less
	Altitude	1000m or less
	Flatness for installation	0.5mm or less
Power Requirements	Controller	5.0kVA
	YRC1000	YRC1000

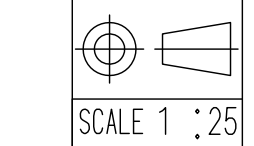
*1 Repeatability is conformed to ISO 9283. Unit: mm
 *2 The manipulator is in the home position.

Type	Note
YR-1-07VXB110-A00	Default Specifications



Note:
 1. All rights reserved.
 2. Please note that the data is subject to be deleted without advance notice.
 3. No warranty is given in relation to the data including the specification.
 4. We are not responsible for any damages or loss caused by the use of the data.

FOR STUDY PURPOSE ONLY



YASKAWA
 株式会社 安川電機

Reference Drawing

TITLE MOTOMAN-GP110B
 DIMENSION DIAGRAM

DRWN DATE Feb.13.'18
 DWG.NO. HW1385707