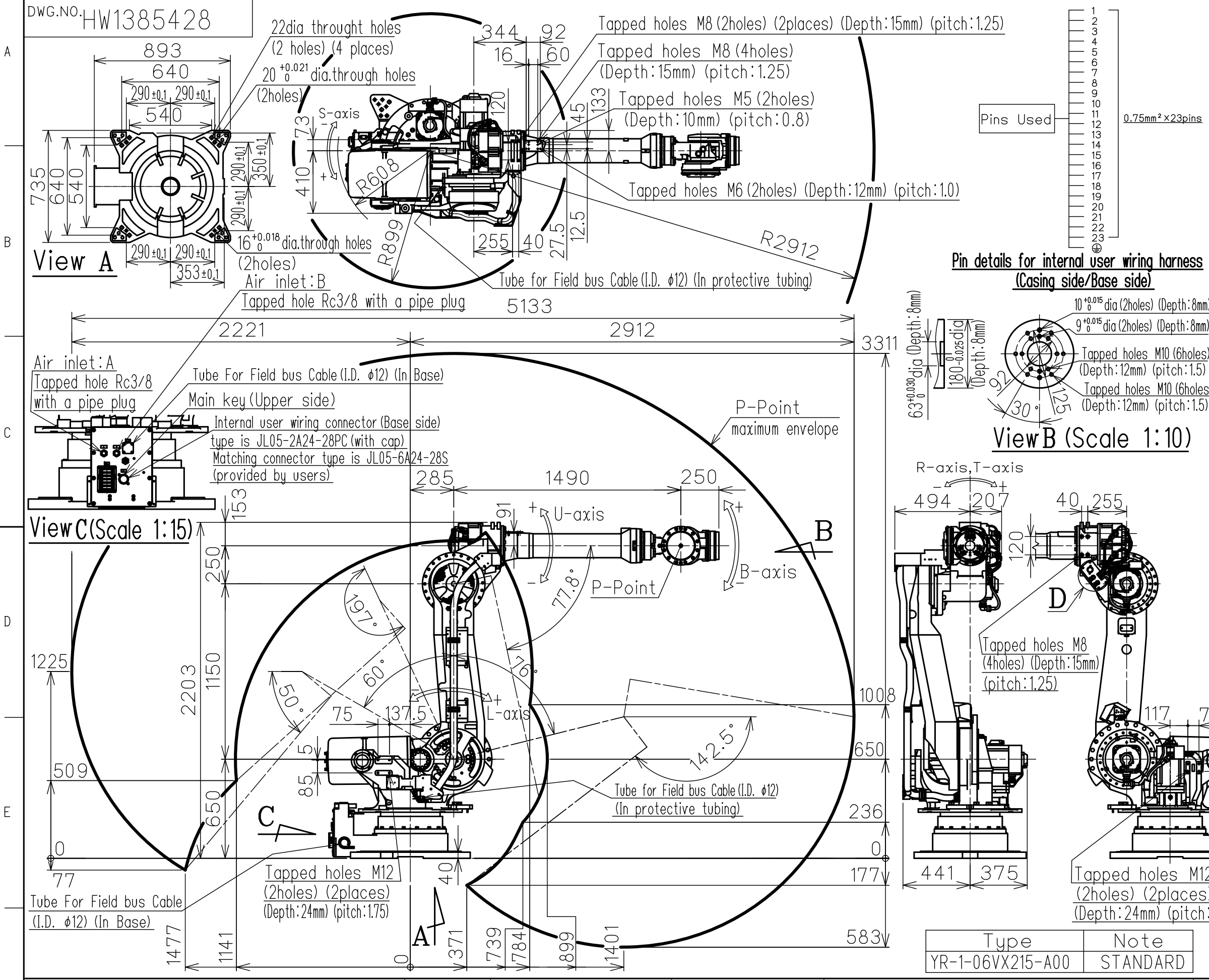


DWG.NO. HW1385428



Item	Model	MOTOMAN-GP215
Configuration	Vertically articulated	
Degree of Freedom	6	
Payload	Wrist	215 kg
	On U-arm	50 kg
Repeatability (*1)	0.05 mm	
Range of Motion	S-Axis (Turning)	-180° - +180°
	L-Axis (Lower Arm)	-60° - +76°
	U-Axis (Upper Arm)	-77.8° - +197°
	R-Axis (Roll)	-360° - +360°
	B-Axis (Pitch/Yaw)	-125° - +125°
Max Speed	T-Axis (Twist)	-360° - +360°
	S-Axis	1.75 rad/s, 100°/s
	L-Axis	1.57 rad/s, 90°/s
	U-Axis	1.69 rad/s, 97°/s
	R-Axis	2.09 rad/s, 120°/s
Allowable Moment	B-Axis	2.09 rad/s, 120°/s
	T-Axis	3.32 rad/s, 190°/s
	R-Axis	1176 N·m (120kgf·m)
Allowable Inertia (GD ² /4)	B-Axis	1176 N·m (120kgf·m)
	T-Axis	710 N·m (72kgf·m)
	R-Axis	317 kg·m ²
Approx. Robot mass	B-Axis	317 kg·m ²
	T-Axis	200 kg·m ²
Protected structure	Body:IP54 Wrist:IP67	
Mounting method	Floor-mounted	
Ambient Conditions	Temperature	0°C to +45°C
	Humidity	20%RH to 80%RH (Non-condensing)
	Vibration	4.9m/s ² (0.5G) or less
	Altitude	1000m or less
	Flatness for installation	0.5mm or less
Others	<ul style="list-style-type: none"> Free from dirt, dust, oil, soot, or water. Free from explosive and corrosive gas or liquid. Free from excessive electrical noise (plasma). Free from strong magnetic fields. 	
	Power Requirements	5.0kVA
Controller	YRC1000	

*1 Repeatability is conformed to ISO 9283.
 *2 The manipulator is in the home position.
 Units: mm

Note:
 1. All rights reserved.
 2. Please note that the data is subject to be deleted without advance notice.
 3. No warranty is given in relation to the data including the specification.
 4. We are not responsible for any damages or loss caused by the use of the data.

FOR STUDY PURPOSE ONLY



SCALE 1:25

TITLE MOTOMAN-GP215
 DIMENSION DIAGRAM

DRWN DATE Oct.03.'17
 DWG.NO. HW1385428
 SIZE A3