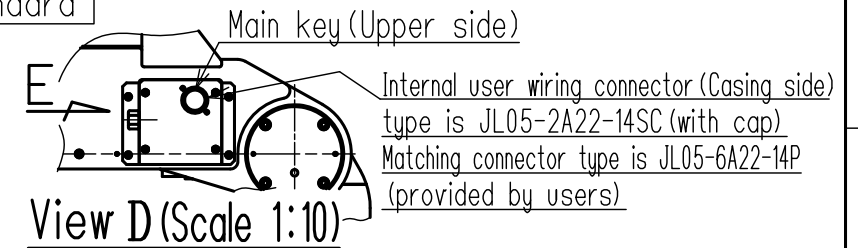


Item	Model	MOTOMAN-GP400
Configuration	Vertically articulated	
Degree of Freedom	6	
Payload	Wrist	400kg
	On U-arm	50kg
Repeatability (※1)	0.1 mm	
Range of Motion	S-Axis (Turning)	-180° - +180°
	L-Axis (Lower Arm)	-55° - +61°
	U-Axis (Upper Arm)	-113° - +18°
	R-Axis (Roll)	-360° - +360°
	B-Axis (Pitch/Yaw)	-115° - +115°
	T-Axis (Twist)	-360° - +360°
Max Speed	S-Axis	1.78rad/s (102° /s)
	L-Axis	1.69rad/s (97° /s)
	U-Axis	1.69rad/s (97° /s)
	R-Axis	1.40rad/s (80° /s)
	B-Axis	1.40rad/s (80° /s)
Allowable Moment	T-Axis	3.00rad/s (172° /s)
	R-Axis	2989N·m (305kgf·m)
	B-Axis	2989N·m (305kgf·m)
Allowable Inertia (GD <sup>2</sup> /4)	T-Axis	1343N·m (137kgf·m)
	R-Axis	500kg·m <sup>2</sup>
	B-Axis	500kg·m <sup>2</sup>
Approx. Robot mass	2840 kg	
Protected structure	Body:IP30 Wrist:IP67	
Mounting method	Floor-mounted	
Ambient Conditions	Temperature	0 to +45°C
	Humidity	20 to 80%RH (Non-condensing)
	Vibration	4.9m/s <sup>2</sup> (0.5G) or less
	Altitude	1000m or less
	Others	<ul style="list-style-type: none"> <li>•Free from explosive or corrosive gas and liquid.</li> <li>•Free from dust,soot,oil,or water.</li> <li>•Free from electrical noise.</li> <li>•Free from strong magnetic fields.</li> </ul>
Power Requirements	7.0KVA	
Controller	YRC1000	

※1 Repeatability is conformed to ISO 9283.  
 ※2 The manipulator is in the home position.

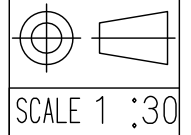
Units: mm

Type	Note
YR-1-06VX400-A00	Standard



Note:  
 1. All rights reserved.  
 2. Please note that the data is subject to be deleted without advance notice.  
 3. No warranty is given in relation to the data including the specification.  
 4. We are not responsible for any damages or loss caused by the use of the data.

FOR STUDY PURPOSE ONLY



**YASKAWA**  
 株式会社安川電機

Reference Drawing

TITLE MOTOMAN-GP400  
 DIMENSION DIAGRAM

DRWN DATE Oct.03.'17  
 DWG.NO. HW1385404

SIZE A3